

Ian R Hambleton BA, MSc, PhD

Lot 1, Gregg Farm, St. Andrew, Barbados, West Indies.

ian.hambleton@cavehill.uwi.edu • ian.hambleton@gmail.com • (+1246) 830 3399 • (+44) 7979 721781

Curriculum Vitae (March 2023)

A. Basic Career Data	2
B. A Summary of Contributions to Science	3
C. Refereed Scholarly Output	10
D. Non-refereed Academic output	25
E. Other Outputs: Data Handling Infrastructure	39
F. Honorific Awards for Scholarship	41
G. Invitations to Present at Academic Meetings	42
H. Invitation to serve on National/Regional/International Public and Scholarly Bodies	43
I. Funding Attracted for Research and Study	44
J. Graduate Students Supervised	50
K. Programme Development	52
L. Evidence of Quality Teaching	53

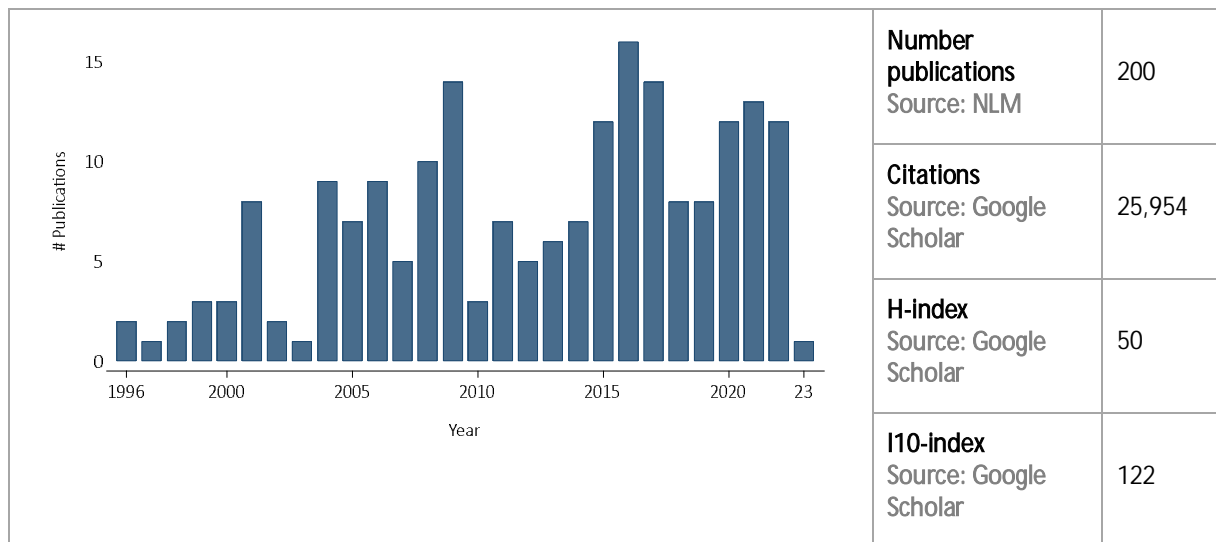
A. Basic Career Data

ORCID	Online Biosketch: https://orcid.org/0000-0002-5638-9794
PubMed	Online Publication Listing: https://www.ncbi.nlm.nih.gov/myncbi/ian.hambleton.1/bibliography/public/

Name	Ian Richard Hambleton
Date of birth	15th February 1969
Nationality	British
Objectives	To disseminate my knowledge of data handling and analytics to non-statisticians working in health research. To lead or contribute to all stages of the research process. To provide appropriate and accurate quantitative solutions to internationally and regionally relevant public health challenges.
Biosketch	<p>I am a biostatistician with a first degree in Mathematics, a Masters in Medical Statistics and a Doctorate in Statistical Epidemiology. I have worked as a statistician for 25 years in Europe, Africa, and the Caribbean, for the UK Medical Research Council, The London School of Hygiene and Tropical Medicine, and The University of the West Indies (UWI). I have expertise in a range of research study designs, and have a long history of leading project data handling and analytics, including the management of solutions for robust and secure online data collection. I have published around 200 peer-reviewed articles on a range of chronic and infectious diseases. Working with academia, I have secured over 14 million US dollars of funding for health-related research. With colleagues at the University of the West Indies and elsewhere, I am organizing analyses for the Barbados National Registry for chronic non-communicable diseases, for 'The Health of the Nation' - a national survey to assess Barbadian health, and for ECHORN – the Eastern Caribbean Health Outcomes Research Network. I have been a principal investigator on a recently completed NIH award to better understand health inequalities in the Caribbean, and continue to investigate Caribbean health inequalities using a wide range of publically available datasets. Recently completed projects include an evaluation of the Barbados tax on sugar-sweetened beverages, the use of virtual environments for testing the utility of different policies for reducing the regional diabetes burden, and the development of methods for assessing the health impacts of community food production initiatives – a response to the problem of food security in small island developing states. I am committed to open-access data, and am Principal Investigator on a grant to facilitate and encourage Caribbean data-sharing (www.iadb.org/en/project/RG-T4186). I am a statistical editor for the Cystic Fibrosis and Genetic Disorders group of the Cochrane Collaboration - an international not-for-profit organization dedicated to improving healthcare decision-making globally. I work with the Pan-American Health Organization on various projects, including using the Global Health Estimates (who.int/data/global-health-estimates), and digital transformation for health in the Americas. I am a statistical consultant for UNICEF – the United National Children's Fund, and a statistical reviewer for The National Institutes of Health in the US, and the Medical Research Council and the National Institute for Health Research in the UK.</p>

B. A Summary of Contributions to Science

A summary of peer-reviewed publications (Mar 2023)



Key Project Contributions to science

- (1) **NCD-RisC and CC-LAC data pooling initiatives.** I have contributed to the global NCD-RisC initiative as a data provider and writing committee member. The NCD Risk Factor Collaboration (NCD-RisC) is a network of health scientists around the world that provides rigorous and timely data on major risk factors for non-communicable diseases for all of the world's countries. CC-LAC (Cohorts Consortium of Latin America and the Caribbean) is a regional data pooling initiative to examine the association between cardio-metabolic risk factors (e.g. blood pressure, glucose and lipids) and non-fatal and fatal cardiovascular outcomes. I have contributed to the following published articles:
- a. Cohorts Consortium of Latin America and the Caribbean (CC-LAC). Derivation, internal validation, and recalibration of a cardiovascular risk score for Latin America and the Caribbean (Glorisk-LAC): A pooled analysis of cohort studies. *Lancet Reg Health Am.* 2022 May;9:None. doi: 10.1016/j.lana.2022.100258.
 - b. Rodrigo Martin Carrillo-Larco, Dalia Stern, Ian R Hambleton, Anselm Hennis, Mariachiara Di Cesare, Paulo Lotufo, et al Impact of common cardio-metabolic risk factors on fatal and non-fatal cardiovascular disease in Latin America and the Caribbean: an individual-level pooled analysis of 31 cohort studies, *The Lancet Regional Health - Americas*, Volume 4, 2021, 100068, ISSN 2667-193X, <https://doi.org/10.1016/j.lana.2021.100068>.
 - b. NCD Risk Factor Collaboration (NCD-RisC). Height and body-mass index trajectories of school-aged children and adolescents from 1985 to 2019 in 200 countries and territories: a pooled analysis of 2181 population-based studies with 65 million participants. *Lancet.* 2020 Nov 7;396(10261):1511-1524. doi: 10.1016/S0140-6736(20)31859-6. PMID: 33160572; PMCID: PMC7658740.
 - c. NCD Risk Factor Collaboration (NCD-RisC). Heterogeneous contributions of change in population distribution of body mass index to change in obesity and underweight. *Elife.* 2021 Mar 9;10:e60060. doi: 10.7554/eLife.60060. PMID: 33685583; PMCID: PMC7943191.

- d. NCD Risk Factor Collaboration (NCD-RisC). Worldwide trends in hypertension prevalence and progress in treatment and control from 1990 to 2019: a pooled analysis of 1201 population-representative studies with 104 million participants. *Lancet*. 2021 Sep 11;398(10304):957-980. doi: 10.1016/S0140-6736(21)01330-1. Epub 2021 Aug 24. PMID: 34450083.
- e. NCD Risk Factor Collaboration (NCD-RisC). Repositioning of the global epicentre of non-optimal cholesterol. *Nature*. 2020 Jun;582(7810):73-77. doi: 10.1038/s41586-020-2338-1. Epub 2020 Jun 3. PMID: 32494083; PMCID: PMC7332422.
- f. NCD Risk Factor Collaboration (NCD-RisC)—Americas Working Group. Trends in cardiometabolic risk factors in the Americas between 1980 and 2014: a pooled analysis of population-based surveys. *Lancet Glob Health*. 2020 Jan;8(1):e123-e133. doi: 10.1016/S2214-109X(19)30484-X. Erratum in: *Lancet Glob Health*. 2020 May;8(5):e648
- g. NCD Risk Factor Collaboration (NCD-RisC). Rising rural body-mass index is the main driver of the global obesity epidemic in adults. *Nature*. 2019 May;569(7755):260-264. doi: 10.1038/s41586-019-1171-x.
- h. NCD Risk Factor Collaboration (NCD-RisC). Contributions of mean and shape of blood pressure distribution to worldwide trends and variations in raised blood pressure: a pooled analysis of 1018 population-based measurement studies with 88.6 million participants. *Int J Epidemiol*. 2018 Mar 19. doi: 10.1093/ije/dyy016.
- i. NCD Risk Factor Collaboration (NCD-RisC). Worldwide trends in body-mass index, underweight, overweight, and obesity from 1975 to 2016: a pooled analysis of 2416 population-based measurement studies in 128.9 million children, adolescents, and adults. *Lancet*. 2017 Dec 16;390(10113):2627-2642. doi: 10.1016/S0140-6736(17)32129-3.
- j. NCD Risk Factor Collaboration (NCD-RisC). Worldwide trends in blood pressure from 1975 to 2015: a pooled analysis of 1479 population-based measurement studies with 19.1 million participants. *Lancet*. 2017 Jan 7;389(10064):37-55. doi: 10.1016/S0140-6736(16)31919-5.
- k. NCD Risk Factor Collaboration (NCD-RisC). A century of trends in adult human height. *Elife*. 2016 Jul 26;5. pii: e13410. doi: 10.7554/eLife.13410.
- l. NCD Risk Factor Collaboration (NCD-RisC). Worldwide trends in diabetes since 1980: a pooled analysis of 751 population-based studies with 4.4 million participants. *Lancet*. 2016 Apr 9;387(10027):1513-30. doi: 10.1016/S0140-6736(16)00618-8.

(2) COVID-19 regional surveillance outputs. In March 2020, the Barbados Ministry of Health and Wellness asked The University of the West Indies for evidence to help the planning of a government response to the emerging COVID-19 outbreak. From this first request, I have provided evidence-based support to the Barbados government, and the wider CARICOM region. This has included advice on possible national interventions and on emergency public health process planning, backed up by statistical modelling and daily outbreak surveillance. I work closely with the Caribbean Disaster Emergency Management Agency (CDEMA) to provide technical support and surveillance updates to CARICOM member states. Since April 2020, I have produced 23 reports per day – **or over 650 reports per month** – with circulation (via UWI, and regional agencies) across the Caribbean. For daily surveillance outputs, see online surveillance website: <https://ianhambleton.com/covid19>. Additionally, I have presented surveillance updates to regional government planning meetings since April 2020, and have also published peer-reviewed outputs on aspects of the COVID-19 outbreak in the US and the Caribbean.

- a. For daily surveillance outputs, see online surveillance website: <https://ianhambleton.com/covid19>
- b. Pathak EB, Salemi JL, Sobers N, Menard J, **Hambleton IR**. COVID-19 in Children in the United States: Intensive Care Admissions, Estimated Total Infected, and Projected Numbers of Severe Pediatric Cases in 2020. *J Public Health Manag Pract*. 2020 Jul/Aug;26(4):325-333. doi: 10.1097/PHH.0000000000001190.
- c. **Hambleton IR**, Jeyaseelan SM, Murphy MM. COVID-19 in the Caribbean small island developing states: lessons learnt from extreme weather events. *Lancet Glob Health*. 2020 Jul 2:S2214-109X(20)30291-6. doi: 10.1016/S2214-109X(20)30291-6.
- d. Murphy MM, Jeyaseelan SM, Howitt C, Greaves N, Harewood H, Quimby KR, Sobers N, Landis RC, Rocke KD, **Hambleton IR**. COVID-19 containment in the Caribbean: The experience of Small Island developing states. *Research in Globalization*. doi: <https://doi.org/10.1016/j.resglo.2020.100019>.
- e. Sobers NP, Howitt CH, Jeyaseelan SM, Greaves NS, Harewood H, Murphy MM, Quimby K, **Hambleton IR**. Impact of COVID-19 contact tracing on human resources for health - A Caribbean perspective. *Prev Med Rep*. 2021 Jun;22:101367. doi: 10.1016/j.pmedr.2021.101367. Epub 2021 Apr 3. PMID: 33842202; PMCID: PMC8019353.

(3) Sickle Cell Disease in the Caribbean. With colleagues at the Jamaican Sickle Cell Unit I have published numerous articles from the long-running Jamaican Sickle Cell Disease Cohort Study. I present several reports from this influential disease cohort. (A) This work was the culmination of two years of fieldwork, tracing over 1,000 people with sickle cell disease who had defaulted from a day care clinic. We successfully traced 99% of this defaulted sample, and this allowed us to offer the first survival estimates for homozygous sickle disease in the Caribbean. (B) Neonatal screening is standard practice in many industrialized countries, but is uncommon in developing nations. This study used the unique power of the Jamaican sickle cell cohort study to highlight how many people with sickle cell disease go undetected if neonatal screening is not available. The information has been used in several African countries as a rationale for local neonatal screening programmes. (C) B19 infection often leads to aplastic crisis in people with homozygous sickle cell disease. This short report used a new immunoassay to highlight for the first time that B19 seroconversion could occur without known haematological change, despite close monitoring – about one third of infections do not manifest typical aplasia. (D) This study reported on what is very much a philosophy at the Jamaican sickle cell unit – that the majority of people with sickle cell disease and uncomplicated painful crisis can be treated successfully as outpatients. The study was controversial, but the day-care model has now achieved wide acceptance. (E) A report of elderly survivors with sickle cell disease. The Jamaican Clinic pioneered observations of extreme clinical variation in this single mutation recessive disease.

- a. Wierenga KJ, **Hambleton IR**, Lewis NA. Survival estimates for patients with homozygous sickle-cell disease in Jamaica: a clinic-based population study. *Lancet*. 2001 Mar 3;357(9257):680-3.
- b. **Hambleton IR**, Wierenga KJ. Identifying homozygous sickle-cell disease when neonatal screening is not available: a clinic-based observational study. *J Med Screen*. 2004; 11: 175-179.
- c. Serjeant BE, **Hambleton IR**, Kerr S, Kilty C, Serjeant GR. Haematological response to parvovirus B19 infection in homozygous sickle-cell disease. *Lancet*. 2001 Nov 24;358(9294):1779-1780.
- d. Ware MA, **Hambleton I**, Ochaya I, Serjeant GR. Day-care management of sickle cell painful crisis in Jamaica: a model applicable elsewhere? *Br J Haematol*. 1999 Jan;104(1):93-6.
- e. Serjeant GR, Higgs DR, **Hambleton IR**. Elderly survivors with homozygous sickle cell disease. *N Engl J Med*. 2007 Feb 8;356(6):642-3.

(4) HIV in sub-Saharan Africa. This clinical trial report was the culmination of three-years of fieldwork in rural Tanzania. The results were eagerly awaited and were ultimately disappointing, but the study highlighted many of the difficulties that will be encountered when implementing large-scale pharmaceutical interventions in resource-limited environments. Supplementary papers followed.

- a. Watson-Jones D, Weiss HA, Rusizoka M, Changalucha J, Baisley K, Mugeye K, Tanton C, Ross D, Everett D, Clayton T, Balira R, Knight L, **Hambleton I**, Le Goff J, Belec L, Hayes R. Effect of Herpes Simplex Suppression on Incidence of HIV among Women in Tanzania. *N Engl J Med*. 2008; 358(15):1560-71
- b. Vallely A, **Hambleton IR**, Kasindi S, Knight L, Francis SC, Chirwa T, Everett D et al. Microbicides Development Programme, Tanzania: Are women who work in bars, guesthouses and similar facilities a suitable study population for clinical trials of vaginal microbicide trials in Africa? *PLoS One*, 2010 5(5): e10661.

(5) Health inequalities in the Caribbean. In recent NIH-funded work we have performed a series of analyses that provide new insights into inequalities in health outcomes across the Caribbean and in comparisons with regional neighbors. In two recent examples we have explored inequalities in life expectancy in the Americas and inequalities in mortality rates between African descent populations in the Caribbean and the US. A picture is emerging of the Caribbean with a slowly improving health environment, but at a rate that means the Caribbean is falling behind its regional neighbors in North, Central, and South America. This work has been presented to the annual meeting of CARICOM Chief Medical Officers, and to the annual meeting at PAHO in September of the CARICOM Ministers of Health. The work has received much regional attention in the Caribbean and North America, and has led to country-level collaborations with Ministries of Health in several Caribbean countries. The ultimate goal of such work is to identify vulnerable populations that can benefit from public health intervention, and planning for these interventions is underway.

- a. **Hambleton IR**, Howitt C, Jeyaseelan S, Murphy MM, Hennis AJ, Wilks R, Harris EN, MacLeish M, Sullivan L; U.S. Caribbean Alliance for Health Disparities Research Group (USCAHDR). Trends in Longevity in the Americas: Disparities in Life Expectancy in Women and Men, 1965-2010. *PLoS One*. 2015 Jun 19;10(6):e0129778. doi: 10.1371/journal.pone.0129778.
- b. **Hambleton IR**, Jeyaseelan S, Howitt C, Sobers-Grannum N, Hennis AJ, Wilks RJ, Harris EN, MacLeish M, Sullivan LW; US Caribbean Alliance for Health Disparities Research Group. Cause-of-death disparities in the African diaspora: exploring differences among shared-heritage populations. *Am J Public Health*. 2015 Jul;105 Suppl 3:S491-8. doi: 10.2105/AJPH.2015.302676.

(6) Lower-limb amputations in Barbados. This study of lower-extremity amputation among people with diabetes is a good example of local epidemiology that can guide a future research agenda. The alarming amputation rates and poor subsequent survival highlighted by this study is guiding planning for future interventions.

- a. **Hambleton IR**, Jonnalagadda R, Davis CR, Fraser HS, Chaturvedi N, Hennis AJ. All-cause mortality after diabetes-related amputation in Barbados: a prospective case-control study. *Diabetes Care*. 2009 Feb;32(2):306-7.

Education

- | | | |
|------|-------------|---|
| (04) | Institution | Southampton University |
| | Course | PhD Statistical Epidemiology |
| | Description | Longitudinal studies in sickle cell disease |
| | Period | 1999 – 2003 |
| | | |
| (03) | Institution | Reading University |
| | Course | MSc Biometry (Distinction) |
| | Description | The application of statistical methods to the biological sciences |
| | Period | 1994 -1995 |

(02) Institution Brunel University
 Course BA Mathematics (1st class with honours)
 Description Four-year degree including 18-months in industry
 Period 1988 – 1992

(01) Institution Ravensbourne
 Course 8 O-levels. 2 AO-levels. 3 A-levels.
 Period 1980 – 1987

Work History

(07) Employer The University of the West Indies, Cave Hill Campus
 Position Professor of Biostatistics and Informatics, George Alleyne Chronic Disease Research Centre
 Description Data Management and analysis of Clinical Trials, Population Surveys and Epidemiological studies. National disease registries in cancer, stroke, cardiovascular disease, lupus, and diabetes. National risk factor health surveys. Advisor to PAHO, EU, Barbados Government, other regional NGOs involved in health.
 Period 2010 – present

(06) Employer The University of the West Indies, Cave Hill Campus
 Position Senior Lecturer in Biostatistics, Chronic Disease Research Centre
 Description Data Management and analysis of Clinical Trials, Population Surveys and Epidemiological studies. National disease registries in cancer, stroke, and cardiovascular disease. National risk factor health surveys. Advisor to PAHO, EU, Barbados Government, other regional NGO involved in health.
 Period 2006 – 2010

(05) Employer The London School of Hygiene and Tropical Medicine
 Position Co-investigator / Clinical Trial Statistician
 Description Study management, data management and statistical analysis of two double-blind, randomised clinical trials of HIV interventions in women (1) Aciclovir for HSV-2 infection for HIV prevention (2) Microbicide gel for HIV prevention
 Period 2005 - 2006

(04) Employer The University of the West Indies, Mona Campus

	Position	Senior Lecturer in Biostatistics, The Sickle Cell Unit
	Description	Analyses of ongoing studies, teaching, consultancy. Development of Masters programme in Biostatistics. Managing the activities of the TMRI Statistics Group (Jamaica and Barbados).
	Period	2002 – 2005
(03)	Employer	The Medical Research Council (UK), The Jamaican Sickle Cell Unit
	Position	MRC Postgraduate Research Fellow
	Description	Four-year MRC-funded study using the Jamaican Sickle Cell Disease Cohort Study to develop guidelines for good practice when analysing observational sickle-cell disease data.
	Period	1998 – 2002
(02)	Employer	The Medical Research Council (UK), The Jamaican Sickle Cell Unit
	Position	MRC scientist - statistician
	Description	Statistical analysis of all Unit research. Statistical consultancy. Teaching of statistical software.
	Period	1996 – 1998
(01)	Employer	Charing Cross Medical School, Department of Public Health
	Position	Lecturer in Medical Statistics
	Description	Statistical consultancy. Analysis of major funded projects. Teaching of statistical techniques and software.
	Period	1995 – 1996

Areas of Expertise

- | | |
|---------------|--|
| Data Handling | <ul style="list-style-type: none">● Regulatory frameworks for data management of Randomised Controlled Trials (RCTs).● Data management techniques for ensuring data quality.● Data Management audits.● Data curation.● Data sharing. |
| Statistics | <ul style="list-style-type: none">● Systematic review methodologies● Systematic analyses of available data● Analysis of official statistics● Design and analysis of surveys● Longitudinal modelling techniques.● Coping with missing data● Methods for risk factor selection in prognostic factor studies.● Data visualisation. |
| Epidemiology | <ul style="list-style-type: none">● Systematic reviews and meta-analyses● Health Inequalities● Randomised Controlled Trials● Population Registries● Methods for ensuring Good Clinical Practice (GCP)● Cohort studies.● Techniques for tracking participants and for minimising loss to follow-up.● Bias in RCTs and observational studies. |
| Medical | <ul style="list-style-type: none">● Health in Small Island Developing States● Sickle-cell disease.● Haemoglobinopathies.● Chronic Non-Communicable Diseases● Diabetes● Cardiovascular disease● Health Informatics● Data quality in medical research● Ageing● HIV/AIDS. |

C. Refereed Scholarly Output

I have published **200** articles in international peer reviewed journals (**23** since 2020, **37** since 2018, **63** since 2016). Recent articles have been published in Nature, Lancet, Lancet Global Health, Lancet Americas, International Journal of Epidemiology, eLife, and the Cochrane Database.

2023

(187) Brugulat-Panés A, Randall L, de Sá TH, Anil M, Kwan H, Tatab L, Woodcock J, Hambleton IR, Mogo ERI, Micklesfield L, Pley C, Govia I, Matina SS, Makokha C, Dambisya PM, Karim SA, Pujol-Busquets G, Okop K, Mba CM, Ware LJ, Assah F, Nembulu B, Mukoma G, Lucas WC, Bennett N, Tulloch-Reid MK, Awinja AC, Anand T, Foley L. The Potential for Healthy, Sustainable, and Equitable Transport Systems in Africa and the Caribbean: A Mixed-Methods Systematic Review and Meta-Study. *Sustainability*. 2023; 15(6):5303. <https://doi.org/10.3390/su15065303>

(186) Randall L, Brugulat-Panés A, Woodcock J, Ware LJ, Pley C, Abdool Karim S, Micklesfield L, Mukoma G, Tatab L, Dambisya PM, Matina SS, Hambleton I, Okello G, Assah F, Anil M, Kwan H, Awinja AC, Pujol-Busquets Guillén G, Foley L. Active travel and paratransit use in African cities: Mixed-method systematic review and meta-ethnography. *J Transp Health*. 2023 Jan;28:101558. doi: 10.1016/j.jth.2022.101558. PMID: 36776485; PMCID: PMC9902334.

(185) Kern Rocke, Christina Howitt, Ian Hambleton. Understanding the relationship between built environment features and physical activity in the Caribbean: A scoping review. *Dialogues in Health*. Volume 2, 2023, 100088, ISSN 2772-6533, <https://doi.org/10.1016/j.dialog.2022.100088>.

2022

(184) Knight-Madden JM, Hambleton IR. Inhaled bronchodilators for acute chest syndrome in people with sickle cell disease. *Cochrane Database Syst Rev*. 2022 Dec 2;12(12):CD003733. doi: 10.1002/14651858.CD003733.pub5. PMID: 36458811; PMCID: PMC9717338.

(183) Walker TM, Hambleton IR, Mason KP, Serjeant G. Spleen size in homozygous sickle cell disease: trends in a birth cohort using ultrasound. *Br J Radiol*. 2022 Dec 1;95(1140):20220634. doi: 10.1259/bjr.20220634. Epub 2022 Nov 16. PMID: 36259419; PMCID: PMC9733612.

(182) Evans-Gilbert T, Lashley PM, Lerebours E, Sin Quee C, Singh-Minott I, Fernandes M, Thomas JW, Nelson B, Braithwaite J, Hambleton I. Children and the coronavirus disease 2019 pandemic: a Caribbean perspective. *Rev Panam Salud Publica*. 2022 Aug 30;46:e135. doi: 10.26633/RPSP.2022.135. PMID: 36060198; PMCID: PMC9426950.

(181) Brown CR, Rocke K, Murphy MM, Hambleton IR. Interventions and policies aimed at improving nutrition in Small Island Developing States: a rapid review. *Rev Panam Salud Publica*. 2022 Aug 25;46:e33. doi: 10.26633/RPSP.2022.33. PMID: 36042710; PMCID: PMC9409607.

(180) Serjeant GR, Serjeant BE, Mason KP, Gibson F, Gardner RA, Warren L, Hambleton IR, Thein SL, Happich M, Kulozik AE. Newborn screening for abnormal haemoglobins in Jamaica: Practical issues in an island programme. *J Med Screen*. 2022 Dec;29(4):219-223. doi: 10.1177/09691413221111209. Epub 2022 Aug 8. PMID: 35934992.

(179) Bhagtani D, Augustus E, Haynes E, Iese V, Brown CR, Fesaitu J, Hambleton I, Badrie N, Kroll F, Saint-Ville A, Samuels TA, Forouhi NG, Benjamin-Neelon SE, Unwin N, On Behalf Of The CFaH Team. Dietary Patterns, Food Insecurity, and Their Relationships with Food Sources and Social Determinants in Two Small Island Developing States. *Nutrients*. 2022 Jul 14;14(14):2891. doi: 10.3390/nu14142891. PMID: 35889848; PMCID: PMC9323837.

(178) Cohorts Consortium of Latin America and the Caribbean (CC-LAC). Derivation, internal validation, and recalibration of a cardiovascular risk score for Latin America and the Caribbean (GloboRisk-LAC): A pooled analysis of

cohort studies. *Lancet Reg Health Am*. 2022 May;9:None. doi: 10.1016/j.lana.2022.100258. PMID: 35711683; PMCID: PMC9107390.

(177) Guell C, Brown CR, Navunicagi OW, Iese V, Badrie N, Wairiu M, Saint Ville A, Unwin N; Community Food and Health (CFaH) team. Perspectives on strengthening local food systems in Small Island Developing States. *Food Secur*. 2022;14(5):1227-1240. doi: 10.1007/s12571-022-01281-0. Epub 2022 May 4. PMID: 35528949; PMCID: PMC9067893.

(176) Quimby KR, Murphy MM, Harewood H, Howitt C, Hambleton I, Jeyaseelan SM, Greaves N, Sobers N. Adaptation of a community-based type-2 diabetes mellitus remission intervention during COVID-19: empowering persons living with diabetes to take control. *Implement Sci Commun*. 2022 Jan 24;3(1):5. doi: 10.1186/s43058-022-00255-9. PMID: 35074020; PMCID: PMC8785024.

(175) Foley L, Brugulat-Panés A, Woodcock J, Govia I, Hambleton I, Turner-Moss E, Mogo ERI, Awinja AC, Dambisya PM, Matina SS, Micklesfield L, Abdool Karim S, Ware LJ, Tulloch-Reid M, Assah F, Pley C, Bennett N, Pujol-Busquets G, Okop K, Anand T, Mba CM, Kwan H, Mukoma G, Anil M, Tatah L, Randall L. Socioeconomic and gendered inequities in travel behaviour in Africa: Mixed-method systematic review and meta-ethnography. *Soc Sci Med*. 2022 Jan;292:114545. doi:10.1016/j.socscimed.2021.114545. Epub 2021 Nov 6. PMID: 34802781; PMCID:PMC8783052.

2021

(174) Sobers NP, Hambleton IR, Hassan S, Anderson SG, Brathwaite-Graham L, Lewis K, Ferguson TS. Assessing the effectiveness and implementation of a chronic disease self-management programme in faith-based organisations in Barbados: protocol for a cluster randomised parallel trial. *BMJ Open*. 2021 Oct 4;11(10):e050548. doi: 10.1136/bmjopen-2021-050548.

(173) Williamson GA, Rodrigo S, Guthrie-Dixon N, Blackman E, Beck JR, Hambleton I, Bailey A, Paul T, Ragin CC, Tulloch-Reid MK. A cross-sectional analysis of investigator needs for non-communicable disease research at the University of the West Indies, Mona. *Rev Panam Salud Publica*. 2021 Apr 6;45:e35. doi: 10.26633/RPSP.2021.35. PMID: 33833787; PMCID: PMC8021206.

(172) Serjeant B, Hambleton I, Serjeant G. Retained Splenic Function in an Indian Population with Homozygous Sickle Cell Disease May Have Important Clinical Significance. *Indian J Community Med*. 2021 Oct-Dec;46(4):715-718. doi: 10.4103/ijcm.IJCM_1054_20. Epub 2021 Dec 8. PMID: 35068741; PMCID: PMC8729266.

(171) Greenidge AR, Quimby KR, Rose AMC, Speede A, Hambleton IR, Anderson SG, Landis RC. Direct healthcare services cost of non-healing diabetic foot wounds in an African origin population in Barbados. *Diabet Med*. 2021 Dec 22:e14773. doi: 10.1111/dme.14773. Epub ahead of print. PMID: 34936707.

(170) Sobers NP, Hambleton IR, Hassan S, Anderson SG, Brathwaite-Graham L, Lewis K, Ferguson TS. Assessing the effectiveness and implementation of a chronic disease self-management programme in faith-based organisations in Barbados: protocol for a cluster randomised parallel trial. *BMJ Open*. 2021 Oct 4;11(10):e050548. doi: 10.1136/bmjopen-2021-050548. PMID: 34607863; PMCID: PMC8491298.

(169) Rodrigo M, Carrillo-Larco, Dalia Stern, **Ian R. Hambleton**, Anselm Hennis, Mariachiara Di Cesare, Paulo Lotufo, et al. Impact of common cardio-metabolic risk factors on fatal and non-fatal cardiovascular disease in Latin America and the Caribbean: an individual-level pooled analysis of 31 cohort studies. *The Lancet Regional Health - Americas*, Volume 4, 2021, 100068, ISSN 2667-193X, <https://doi.org/10.1016/j.lana.2021.100068>.

(168) NCD Risk Factor Collaboration (NCD-RisC). Worldwide trends in hypertension prevalence and progress in treatment and control from 1990 to 2019: a pooled analysis of 1201 population-representative studies with 104 million participants. *Lancet*. 2021 Sep 11;398(10304):957-980. doi: 10.1016/S0140-6736(21)01330-1. Epub 2021 Aug 24. PMID: 34450083; PMCID: PMC8446938. (**Hambleton IR**, member of NCD-RisC group)

(167) Lewis G, Thame M, Howitt C, [Hambleton I](#), Serjeant GR. Pregnancy outcome in homozygous sickle cell disease: observations from the Jamaican Birth Cohort. *BJOG*. 2021 Sep;128(10):1703-1710. doi: 10.1111/1471-0528.16696. Epub 2021 Apr 6. PMID: 33683802.

(166) Wade AN, [Hambleton IR](#), Hennis AJM, Howitt C, Jeyaseelan SM, Ojeh NO, Rose AMC, Unwin N. Anthropometric cut-offs to identify hyperglycemia in an Afro-Caribbean population: a cross-sectional population-based study from Barbados. *BMJ Open Diabetes Res Care*. 2021 Aug;9(1):e002246. doi: 10.1136/bmjdr-2021-002246. PMID: 34400464; PMCID: PMC8370513.

(165) Sobers NP, Howitt CH, Jeyaseelan SM, Greaves NS, Harewood H, Murphy MM, Quimby K, [Hambleton IR](#). Impact of COVID-19 contact tracing on human resources for health - A Caribbean perspective. *Prev Med Rep*. 2021 Jun;22:101367. doi: 10.1016/j.pmedr.2021.101367. Epub 2021 Apr 3. PMID: 33842202; PMCID: PMC8019353.

(164) Williamson GA, Rodrigo S, Guthrie-Dixon N, Blackman E, Beck JR, [Hambleton I](#), Bailey A, Paul T, Ragin CC, Tulloch-Reid MK. A cross-sectional analysis of investigator needs for non-communicable disease research at the University of the West Indies, Mona. *Rev Panam Salud Publica*. 2021 Apr 6;45:e35. doi: 10.26633/RPSP.2021.35. PMID: 33833787; PMCID: PMC8021206.

(163) NCD Risk Factor Collaboration (NCD-RisC). Heterogeneous contributions of change in population distribution of body mass index to change in obesity and underweight. *Elife*. 2021 Mar 9;10:e60060. doi: 10.7554/eLife.60060. PMID: 33685583; PMCID: PMC7943191. ([Hambleton IR](#), member of NCD-RisC group)

2020

(162) NCD Risk Factor Collaboration (NCD-RisC). Height and body-mass index trajectories of school-aged children and adolescents from 1985 to 2019 in 200 countries and territories: a pooled analysis of 2181 population-based studies with 65 million participants. *Lancet*. 2020 Nov 7;396(10261):1511-1524. doi: 10.1016/S0140-6736(20)31859-6. PMID: 33160572; PMCID: PMC7658740. ([Hambleton IR](#), member of NCD-RisC group)

(161) Haynes E, Bhagtani D, Iese V, Brown CR, Fesaitu J, [Hambleton I](#), Badrie N, Kroll F, Guell C, Brugulat-Panes A, Saint Ville A, Benjamin-Neelon SE, Foley L, Samuels TA, Wairiu M, Forouhi NG, Unwin N, On Behalf Of The Community Food And Health CFaH Team. Food Sources and Dietary Quality in Small Island Developing States: Development of Methods and Policy Relevant Novel Survey Data from the Pacific and Caribbean. *Nutrients*. 2020 Oct 30;12(11):3350. doi: 10.3390/nu12113350. PMID: 33143309; PMCID: PMC7692177.

(160) Oni T, Assah F, Erzse A, Foley L, Govia I, Hofman KJ, Lambert EV, Micklesfield LK, Shung-King M, Smith J, Turner-Moss E, Unwin N, Wadende P, Woodcock J, Mbanya JC, Norris SA, Obonyo CO, Tulloch-Reid M, Wareham NJ; GDAR network. The global diet and activity research (GDAR) network: a global public health partnership to address upstream NCD risk factors in urban low and middle-income contexts. *Global Health*. 2020 Oct 19;16(1):100. doi: 10.1186/s12992-020-00630-y. PMID: 33076935; PMCID: PMC7570103. ([Hambleton IR](#), member of GDAR group)

(159) Cohorts Consortium of Latin America and the Caribbean (CC-LAC), Carrillo-Larco RM, Di Cesare M, [Hambleton IR](#), Hennis A, Irazola V, Stern D, Ferreccio C, et al. Cohort Profile: The Cohorts Consortium of Latin America and the Caribbean (CC-LAC). *Int J Epidemiol*. 2020 Oct 1;49(5):1437-1437g. doi: 10.1093/ije/dyaa073. Erratum in: *Int J Epidemiol*. 2021 May 17;50(2):703. PMID: 32888015; PMCID: PMC7746413.

(158) Alvarado M, Harris R, Rose A, Unwin N, [Hambleton I](#), Imamura F, Adams J. Using nutritional survey data to inform the design of sugar-sweetened beverage taxes in low-resource contexts: a cross-sectional analysis based on data from an adult Caribbean population. *BMJ Open*. 2020 Sep 10;10(9):e035981. doi: 10.1136/bmjopen-2019-035981. PMID: 32912976; PMCID: PMC7485232.

(157) Brown CR, Howitt C, Murhy MM, **Hambleton IR**, Crizzle, AM. Driving cessation in older adults in a Caribbean small island developing state. *Journal of Transport & Health*. 2020, Vol 18. DOI: <https://doi.org/10.1016/j.jth.2020.100903>.

(156) Murphy MM, Jeyaseelan SM, Howitt C, Greaves N, Harewood H, Quimby KR, Sobers N, Landis RC, Rocke KD, **Hambleton IR**. COVID-19 containment in the Caribbean: The experience of Small Island developing states. *Research in Globalization*. DOI: <https://doi.org/10.1016/j.resglo.2020.100019>. Available online 4 August 2020.

(155) **Hambleton IR**, Jeyaseelan SM, Murphy MM. COVID-19 in the Caribbean small island developing states: lessons learnt from extreme weather events. *Lancet Glob Health*. 2020 Jul 2:S2214-109X(20)30291-6. doi: 10.1016/S2214-109X(20)30291-6. Epub ahead of print.

(154) Pathak EB, Salemi JL, Sobers N, Menard J, **Hambleton IR**. COVID-19 in Children in the United States: Intensive Care Admissions, Estimated Total Infected, and Projected Numbers of Severe Pediatric Cases in 2020. *J Public Health Manag Pract*. 2020 Jul/Aug;26(4):325-333. doi: 10.1097/PHH.0000000000001190.

(153) NCD Risk Factor Collaboration (NCD-RisC)—Americas Working Group. Trends in cardiometabolic risk factors in the Americas between 1980 and 2014: a pooled analysis of population-based surveys. *Lancet Glob Health*. 2020 Jan;8(1):e123-e133. doi: 10.1016/S2214-109X(19)30484-X. Erratum in: *Lancet Glob Health*. 2020 May;8(5):e648. (**Hambleton IR**, member of NCD-RisC writing group).

(152) Wang K, **Hambleton I**, Linnander E, Marengo L, Hassan S, Kumara M, Fredericks LE, Harrigan S, Hasse TA 2nd, Brandt C, Nunez-Smith M; ECHORN Writing Group. Toward Reducing Health Information Inequities in the Caribbean: Our Experience Building a Participatory Health Informatics Project. *Ethn Dis*. 2020 Apr 2;30(Suppl 1):193-202. doi: 10.18865/ed.30.S1.193.

(151) NCD Risk Factor Collaboration (NCD-RisC). Repositioning of the global epicentre of non-optimal cholesterol. *Nature*. 2020 Jun;582(7810):73-77. doi: 10.1038/s41586-020-2338-1. Epub 2020 Jun 3. PMID: 32494083; PMCID: PMC7332422. (**Hambleton IR**, member of NCD-RisC group)

(150) Saluja S, Anderson SG, **Hambleton I**, Shoo H, Livingston M, Jude EB, Lunt M, Dunn G, Heald AH. Foot ulceration and its association with mortality in diabetes mellitus: a meta-analysis. *Diabet Med*. 2020 Feb;37(2):211-218. doi: 10.1111/dme.14151. Epub 2019 Dec 2.

2019

(149) Quashie NT, Howitt C, Hambleton IR. Comparison of Dual Therapies for Lowering Blood Pressure in Black Africans. *N Engl J Med*. 2019 Oct 3;381(14):1391. doi:10.1056/NEJMc1909844.

(148) Estcourt LJ, Hopewell S, Trivella M, **Hambleton IR**, Cho G. Regular long-term red blood cell transfusions for managing chronic chest complications in sickle cell disease. *Cochrane Database Syst Rev*. 2019 Oct 25;2019(10):CD008360. doi: 10.1002/14651858.CD008360.pub5.

(147) Cooper TE, **Hambleton IR**, Ballas SK, Johnston BA, Wiffen PJ. Pharmacological interventions for painful sickle cell vaso-occlusive crises in adults. *Cochrane Database Syst Rev*. 2019 Nov 14;2019(11):CD012187. doi: 10.1002/14651858.CD012187.pub2

(146) NCD Risk Factor Collaboration (NCD-RisC). Rising rural body-mass index in the main driver of the global obesity epidemic in adults. *Nature*. 2019. May-09. <https://doi.org/10.1038/s41586-019-1171-x> (**Hambleton IR**, member of NCD-RisC writing group).

(145) Alvarado M, Unwin N, Sharp SJ, [Hambleton I](#), Murphy MM, Samuels TA, Suhrcke M, Adams J. Assessing the impact of the Barbados sugar-sweetened beverage tax on beverage sales: an observational study. *Int J Behav Nutr Phys Act*. 2019 Jan 30;16(1):13. doi: 10.1186/s12966-019-0776-7.

(144) Sobers N, Rose AMC, Samuels TA, Critchley J, Abed M, [Hambleton I](#), Harvey A, Unwin N. Are there gender differences in acute management and secondary prevention of acute coronary syndromes in Barbados? A cohort study. *BMJ Open*. 2019 Jan 28;9(1):e025977. doi: 10.1136/bmjopen-2018-025977.

2018

(143) Adams OP, Mangera KA, [Hambleton IR](#), Morris EH, Paul-Charles JL. Does peak expiratory flow measured sitting differ from that measured standing? A cross-over study in primary care in Barbados. *BJGP Open*. 2018 Jun 27;2(2):bjgpopen18X101592. doi: 10.3399/bjgpopen18X101592. eCollection 2018 Jul.

(142) Razavi A, [Hambleton J](#), Samuels TA, Sobers N, Unwin N. Premature mortality from cardiovascular disease and diabetes in the Caribbean and associations with health care expenditure, 2001 - 2011. *Rev Panam Salud Publica*. 2018 Dec 17;42:e179. doi: 10.26633/RPSP.2018.179.

(141) Guariguata L, Brown C, Sobers N, [Hambleton I](#), Samuels TA, Unwin N. An updated systematic review and meta-analysis on the social determinants of diabetes and related risk factors in the Caribbean. *Rev Panam Salud Publica*. 2018 Dec 17;42:e171. doi: 10.26633/RPSP.2018.171.

(140) Harris RM, Rose AMC, [Hambleton IR](#), Howitt C, Forouhi NG, Hennis AJM, Samuels TA, Unwin N. Sodium and potassium excretion in an adult Caribbean population of African descent with a high burden of cardiovascular disease. *BMC Public Health*. 2018 Aug 9;18(1):998. doi: 10.1186/s12889-018-5694-0.

(139) Brown CR, [Hambleton I](#), Hercules SM, Unwin N, Murphy MM, Nigel Harris E, Wilks R, MacLeish M, Sullivan L, Sobers-Grannum N; U.S. Caribbean Alliance for Health Disparities Research Group (USCAHDR). Social determinants of prostate cancer in the Caribbean: a systematic review and meta-analysis. *BMC Public Health*. 2018 Jul 20;18(1):900. doi: 10.1186/s12889-018-5696-y.

(138) Harewood-Marshall AS, Craig LS, Martelly TP, Corbin DOC, Maul L, McIntosh-Clarke D, Blackman T, George KS, Hennis AJM, [Hambleton IR](#), Rose AMC. Managing acute ischaemic stroke in a small island developing state: meeting the guidelines in Barbados. *BMC Public Health*. 2018 May 22;18(1):648. doi: 10.1186/s12889-018-5565-8.

(137) NCD Risk Factor Collaboration (NCD-RisC) . Contributions of mean and shape of blood pressure distribution to worldwide trends and variations in raised blood pressure: a pooled analysis of 1018 population-based measurement studies with 88.6 million participants. *Int J Epidemiol*. 2018 Mar 19. doi: 10.1093/ije/dyy016. ([Hambleton IR](#), member of NCD-RisC group)

(136) Serjeant GR, Chin N, Asnani MR, Serjeant BE, Mason KP, [Hambleton IR](#), Knight-Madden JM. Causes of death and early life determinants of survival in homozygous sickle cell disease: The Jamaican cohort study from birth. *PLoS One*. 2018 Mar 1;13(3):e0192710. doi: 10.1371/journal.pone.0192710.

2017

(135) Taylor CG Jr, Taylor G, Atherley A, [Hambleton I](#), Unwin N, Adams OP. The Barbados Insulin Matters (BIM) study: Barriers to insulin therapy among a population-based sample of people with type 2 diabetes in the Caribbean island of Barbados. *J Clin Transl Endocrinol*. 2017 May 4;8:49-53. doi: 10.1016/j.jcte.2017.04.002. eCollection 2017 Jun.

(134) NCD Risk Factor Collaboration (NCD-RisC). Worldwide trends in body-mass index, underweight, overweight, and obesity from 1975 to 2016: a pooled analysis of 2416 population-based measurement studies in 128.9 million children,

adolescents, and adults. *Lancet*. 2017 Oct 10. pii: S0140-6736(17)32129-3. doi: 10.1016/S0140-6736(17)32129-3. (**Hambleton IR**, member of NCD-RisC group)

(133) Unwin N, Howitt C, Rose AM, Samuels TA, Hennis AJ, **Hambleton IR**. Prevalence and phenotype of diabetes and prediabetes using fasting glucose vs HbA1c in a Caribbean population. *J Glob Health*. 2017 Dec;7(2):020407. doi: 10.7189/jogh.07.020407.

(132) Ward JM, Schmalenberg K, Antonishyn NA, **Hambleton IR**, Blackman EL, Levett PN, Gittens-St Hilaire MV. Human papillomavirus genotype distribution in cervical samples among vaccine naive Barbados women. *Cancer Causes Control*. 2017 Nov;28(11):1323-1332. doi: 10.1007/s10552-017-0959-y.

(131) Serjeant GR, Serjeant BE, **Hambleton IR**, Oakley M, Thein SL, Clark B. A Plea for the Newborn Diagnosis of Hb S-Hereditary Persistence of Fetal Hemoglobin. *Hemoglobin*. 2017 May;41(3):216-217. doi: 10.1080/03630269.2017.1360336. Epub 2017 Sep 5.

(130) Alvarado M, Kostova D, Suhrcke M, **Hambleton I**, Hassell T, Samuels TA, Adams J, Unwin N; Barbados SSB Tax Evaluation Group. Trends in beverage prices following the introduction of a tax on sugar-sweetened beverages in Barbados. *Prev Med*. 2017 Jul 15. pii: S0091-7435(17)30260-8. doi: 10.1016/j.ypmed.2017.07.013.

(129) **Hambleton IR**, Jeyaseelan SM, Howitt C, Hennis AJ. Monitoring Caribbean tobacco use: baseline adolescent smoking prevalence and regional disparities. *Salud Publica Mex*. 2017;59Suppl 1(Suppl 1):12-21. doi: 10.21149/7849.

(128) Brown CR, **Hambleton IR**, Sobers-Grannum N, Hercules SM, Unwin N, Nigel Harris E, Wilks R, MacLeish M, Sullivan L, Murphy MM; U.S. Caribbean Alliance for Health Disparities Research Group (USCAHDR). Social determinants of depression and suicidal behaviour in the Caribbean: a systematic review. *BMC Public Health*. 2017 Jun 15;17(1):577. doi: 10.1186/s12889-017-4371-z.

(127) Ferguson TS, Younger-Coleman NOM, Tulloch-Reid MK, **Hambleton IR**, Francis DK, Bennett NR, McFarlane SR, Bidulescu A, MacLeish MY, Hennis AJM, Wilks RJ, Harris EN, Sullivan LW. Educational Health Disparities in Cardiovascular Disease Risk Factors: Findings from Jamaica Health and Lifestyle Survey 2007-2008. *Front Cardiovasc Med*. 2017 May 15;4:28. doi: 10.3389/fcvm.2017.00028.

(126) Flower C, **Hambleton I**, Corbin D, Marquez S, Edghill R. The spectrum of neuropsychiatric lupus in a Black Caribbean population: a report of the Barbados National Lupus Registry. *Lupus*. 2017 Sep;26(10):1034-1041. doi: 10.1177/0961203317692431. Epub 2017 Feb 22.

(125) Brown CR, **Hambleton IR**, Hercules SM, Alvarado M, Unwin N, Murphy MM, Harris EN, Wilks R, MacLeish M, Sullivan L, Sobers-Grannum N; U.S. Caribbean Alliance for Health Disparities Research Group (USCAHDR). Social determinants of breast cancer in the Caribbean: a systematic review. *Int J Equity Health*. 2017 Apr 5;16(1):60. doi: 10.1186/s12939-017-0540-z.

(124) Bidulescu A, Ferguson TS, **Hambleton I**, Younger-Coleman N, Francis D, Bennett N, Griswold M, Fox E, MacLeish M, Wilks R, Harris EN, Sullivan LW. Educational health disparities in hypertension and diabetes mellitus among African descent populations in the Caribbean and the USA: a comparative analysis from the Spanish town cohort (Jamaica) and the Jackson heart study (USA). *Int J Equity Health*. 2017 Feb 14;16(1):33. doi: 10.1186/s12939-017-0527-9.

(123) NCD Risk Factor Collaboration (NCD-RisC). Worldwide trends in blood pressure from 1975 to 2015: a pooled analysis of 1479 population-based measurement studies with 19.1 million participants. *Lancet*. 2017 Jan 7;389(10064):37-55. doi:10.1016/S0140-6736(16)31919-5. (**Hambleton IR**, member of NCD-RisC group)

2016

(122) Flower C, **Hambleton I**, Campbell M. The Effect of Psychosocial and Neuropsychiatric Factors on Medication Adherence in a Cohort of Women With Systemic Lupus Erythematosus. *J Clin Rheumatol*. 2016 Dec;22(8):411-417.

(121) Taylor CG Jr, Taylor G, Atherley A, **Hambleton I**, Unwin N, Adams OP. Barbados Insulin Matters (BIM) study: Perceptions on insulin initiation by primary care doctors in the Caribbean island of Barbados. *Prim Care Diabetes*. 2016 Nov 4. pii:S1751-9918(16)30104-8. doi: 10.1016/j.pcd.2016.10.001.

(120) Guariguata L, Guell C, Samuels TA, Rouwette EA, Woodcock J, **Hambleton IR**, Unwin N. Systems Science for Caribbean Health: the development and piloting of a model for guiding policy on diabetes in the Caribbean. *Health Res Policy Syst*. 2016 Oct 26;14(1):79

(119) Rose AM, **Hambleton IR**, Jeyaseelan SM, Howitt C, Harewood R, Campbell J, Martelly TN, Blackman T, George KS, Hassell TA, Corbin DO, Delice R, Prussia P, Legetic B, Hennis AJ. Establishing national noncommunicable disease surveillance in a developing country: a model for small island nations. *Rev Panam Salud Publica*. 2016 Feb;39(2):76-85

(118) Howitt C, Brage S, **Hambleton IR**, Westgate K, Samuels TA, Rose AM, Unwin N. A cross-sectional study of physical activity and sedentary behaviours in a Caribbean population: combining objective and questionnaire data to guide future interventions. *BMC Public Health*. 2016 Oct 1;16(1):1036

(117) Knight-Madden JM, **Hambleton IR**. Inhaled bronchodilators for acute chest syndrome in people with sickle cell disease. *Cochrane Database Syst Rev*. 2016 Sep 27;9:CD003733

(116) Morey F, **Hambleton IR**, Unwin N, Samuels TA. Ethnic and Gender Disparities in Premature Adult Mortality in Belize 2008-2010. *PLoS One*. 2016 Sep 19;11(9):e0163172. doi: 10.1371/journal.pone.0163172

(115) Nolan SJ, **Hambleton I**, Dwan K. The Use and Reporting of the Cross-Over Study Design in Clinical Trials and Systematic Reviews: A Systematic Assessment. *PLoS One*. 2016 Jul 13;11(7):e0159014. doi: 10.1371/journal.pone.0159014

(114) Estcourt LJ, Fortin PM, Hopewell S, Trivella M, **Hambleton IR**, Cho G. Regular long-term red blood cell transfusions for managing chronic chest complications in sickle cell disease. *Cochrane Database Syst Rev*. 2016 May 20;(5):CD008360. doi: 10.1002/14651858.CD008360.pub4

(113) NCD Risk Factor Collaboration (NCD-RisC). A century of trends in adult human height. *Elife*. 2016 Jul 26;5. pii: e13410. doi: 10.7554/eLife.13410. (**Hambleton IR**, member of NCD-RisC group)

(112) Unwin N, **Hambleton IR**. Neighbourhood of residence and the risk of type 2 diabetes. *Lancet Diabetes Endocrinol*. 2016 Apr 27. pii: S2213-8587(16)30056-0. doi: 10.1016/S2213-8587(16)30056-0.

(111) NCD Risk Factor Collaboration (NCD-RisC). Worldwide trends in diabetes since 1980: a pooled analysis of 751 population-based studies with 4.4 million participants. *Lancet*. 2016 Apr 9;387(10027):1513-30. doi: 10.1016/S0140-6736(16)00618-8. (**Hambleton IR**, member of NCD-RisC group)

(110) Atherley AE, **Hambleton IR**, Unwin N, George C, Lashley PM, Taylor CG Jr. Exploring the transition of undergraduate medical students into a clinical clerkship using organizational socialization theory. *Perspect Med Educ*. 2016 Apr;5(2):78-87. doi: 10.1007/s40037-015-0241-5.

2015

(109) Mason K, Gibson F, Gardner R, Warren L, Fisher C, Higgs D, Happich M, Kulozik A, **Hambleton I**, Serjeant BE, Serjeant GR. Newborn Screening for Sickle Cell Disease: Jamaican Experience. *West Indian Med J*. 2015 Sep 22;65(1). doi: 10.7727/wimj.2015.492.

(108) Howitt C, [Hambleton IR](#), Rose AM, Hennis A, Samuels TA, George KS, Unwin N. Social distribution of diabetes, hypertension and related risk factors in Barbados: a cross-sectional study. *BMJ Open*. 2015 Dec 18;5(12):e008869. doi: 10.1136/bmjopen-2015-008869.

(107) Rose AMC, [Hambleton IR](#), Jeyaseelan SM, Howitt CH, Harewood R, Campbell J, Blackman T, George KS, Hassell TA, Corbin DOC, Delice R, Prussia P, Legetic B, Hennis AJM. Establishing national non-communicable disease surveillance in a developing country: A model for small island nations. *Rev Panam Salud Publica*. 2015 (In Press)

(106) Serjeant G, [Hambleton IR](#). Priapism in Homozygous Sickle Cell Disease: A 40-year Study of the Natural History. *West Indian Med J*. 2015 Apr 27;64(3). doi: 10.7727/wimj.2014.119.

(105) [Hambleton IR](#), Howitt C, Rose AM, Samuels TA, Unwin N. Global trends in dietary quality. *Lancet Glob Health*. 2015 Oct;3(10):e593. doi: 10.1016/S2214-109X(15)00082-0.

(104) Taylor CG Jr, Bynoe K, Worme A, [Hambleton I](#), Atherley A, Husbands A, Unwin N. A checklist that enhances the provision of education during insulin initiation simulation: a randomized controlled trial. *Diabet Med*. 2015 Sep 4. doi: 10.1111/dme.12956.

(103) Quimby KR, [Hambleton IR](#), Landis RC. Intravenous infusion of haptoglobin for the prevention of adverse clinical outcome in Sickle Cell Disease. *Med Hypotheses*. 2015 Oct;85(4):424-32. doi: 10.1016/j.mehy.2015.06.023.

(102) [Hambleton IR](#), Howitt C, Jeyaseelan S, Murphy MM, Hennis AJ, Wilks R, Harris EN, MacLeish M, Sullivan L; U.S. Caribbean Alliance for Health Disparities Research Group (USCAHDR). Trends in Longevity in the Americas: Disparities in Life Expectancy in Women and Men, 1965-2010. *PLoS One*. 2015 Jun 19;10(6):e0129778. doi: 10.1371/journal.pone.0129778.

(101) Rose AM, Belgrave NR, Maul L, Hennis AJ, Delice R, [Hambleton IR](#). Predicting the burden of acute myocardial infarction in a country with limited resources: combining data from routine sources. *Int Health*. 2015 May 20. pii: ihv030.

(100) Landis RC, Carmichael-Simmons K, [Hambleton IR](#), Best A. HIV Viral Load Trends in Six Eastern Caribbean Countries Utilizing a Regional Laboratory Referral Service: Implications for Treatment as Prevention. *PLoS One*. 2015 Apr 29;10(4):e0125435. doi: 10.1371/journal.pone.0125435.

(99) [Hambleton IR](#), Jeyaseelan S, Howitt C, Sobers-Grannum N, Hennis AJ, Wilks RJ, Harris EN, MacLeish M, Sullivan LW; US Caribbean Alliance for Health Disparities Research Group. Cause-of-death disparities in the African diaspora: exploring differences among shared-heritage populations. *Am J Public Health*. 2015 Jul;105 Suppl 3:S491-8. doi: 10.2105/AJPH.2015.302676.

(98) Patra PK, Khodiar PK, [Hambleton IR](#), Serjeant GR. The Chhattisgarh state screening programme for the sickle cell gene: a cost-effective approach to a public health problem. *J Community Genet*. 2015 Oct;6(4):361-8. doi: 10.1007/s12687-015-0222-8.

2014

(97) Quimby KR, Moe S, Sealy I, Nicholls C, [Hambleton IR](#), Landis RC. Clinical findings associated with homozygous sickle cell disease in the Barbadian population--do we need a national SCD registry? *BMC Res Notes*. 2014 Feb 22;7:102. doi: 10.1186/1756-0500-7-102.

(96) Taylor CG Jr, Krimholtz M, Belgrave KC, [Hambleton I](#), George CN, Rayman G. The extensive inpatient burden of diabetes and diabetes-related foot disease in Barbados. *Clin Med*. 2014 Aug;14(4):367-70. doi: 10.7861/clinmedicine.14-4-367.

(95) Cho G, [Hambleton IR](#). Regular long-term red blood cell transfusions for managing chronic chest complications in sickle cell disease. *Cochrane Database Syst Rev*. 2014 Jan 8;1:CD008360. doi: 10.1002/14651858.CD008360.pub3.

(94) Guariguata L, Whiting DR, [Hambleton IR](#), Beagley J, Linnenkamp U, Shaw JE. Global estimates of diabetes prevalence for 2013 and projections for 2035 for the IDF Diabetes Atlas. *Diabetes Res Clin Pract*. 2014 Dec. [Epub ahead of print].

(93) Yisahak SF, Beagley J, [Hambleton IR](#), Narayan KM; on behalf of the IDF Diabetes Atlas. Diabetes in North America and The Caribbean: 2013 update for the IDF Diabetes Atlas. *Diabetes Res Clin Pract*. 2014 Feb;103(2):223-30. doi: 10.1016/j.diabres.

2013

(92) Drakes N, Perks C, Kumar A, Quimby K, Clarke C, Patel R, [Hambleton IR](#), Landis RC. Prevalence and risk factors for inter-generational Sex: a cross-sectional cluster survey of Barbadian females aged 15-19. *BMC Womens Health*. 2013 Dec 27;13:53. doi: 10.1186/1472-6874-13-53.

(91) Quimby KR, Flower C, [Hambleton IR](#), Landis RC, Hennis AJ. Comparison of the systemic lupus erythematosus activity questionnaire and the systemic lupus erythematosus disease activity index in a black barbadian population. *Int J Rheumatol*. 2013;2013:875369. doi: 10.1155/2013/875369. Epub 2013 Oct 24.

(90) Granado MN, Guell C, [Hambleton IR](#), Hennis AJ, Rose AM. Exploring breast cancer screening barriers among Barbadian women: a focus group study of mammography in a resource-constrained setting. *Critical Public Health*. Nov, 2013

(89) Landis RC, Branch-Beckles SL, Crichlow S, [Hambleton IR](#), Best A. Ten Year Trends in Community HIV Viral Load in Barbados: Implications for Treatment as Prevention. *PLoS One*. 2013;8(3):e58590. doi: 10.1371/journal.pone.0058590. Epub 2013 Mar 8.

(88) Quimby K, [Hambleton I](#). Interventions for caregivers for the recognition of disease-related complications in children with sickle cell disease. Protocol. *The Cochrane Library*. 2013. doi: 10.1002/14651858.CD010300

(87) Greenidge AR, Hall KR, [Hambleton IR](#), Thomas R, Monroe DM, Landis RC. Plasmin Activation of Glial Cells through Protease-Activated Receptor 1. *Patholog Res Int*. 2013;2013:314709. doi: 10.1155/2013/314709. Epub 2013 Jan 28.

2012

(86) Ndugwa C, Higgs D, [Hambleton I](#), Mason K, Serjeant BE, Serjeant GR. Homozygous sickle cell disease in Uganda and Jamaica. A Comparison of Bantu and Benin haplotypes. *West Ind Med J* 2012;61:684-91.

(85) Gibson F, Mason K, Serjeant B, Kulozik A, Happich M, Tolle G, [Hambleton I](#), Serjeant G. Screening for the beta-thalassaemia trait: hazards among populations of West African Ancestry. *J Community Genet*. 2012 Jan;3(1):13-8. doi: 10.1007/s12687-011-0069-6. Epub 2011 Nov 3.

(84) Davis MF, Baron P, Price LB, Williams DL, Jeyaseelan S, [Hambleton IR](#), Diette GB, Breyse PN, McCormack MC. Dry collection and culture methods for recovery of methicillin-susceptible and methicillin-resistant *Staphylococcus aureus* strains from indoor home environments. *Appl Environ Microbiol*. 2012 Apr;78(7):2474-6.

(83) Flower C, Hennis AJ, [Hambleton IR](#), Nicholson GD, Liang MH. Systemic lupus erythematosus in an Afro-Caribbean population: incidence, clinical manifestations, and survival in the Barbados National Lupus Registry. *Arthritis Care and Research*, 2012 Mar 5. doi: 10.1002/acr.21656.

2011

(82) Thame M, Lewis J, [Hambleton I](#), Trotman H, Serjeant G. Pattern of pregnancy weight gain in homozygous sickle cell disease and effect on birth size. *West Indian Med J*. 2011 Jan;60(1):36-40.

(81) Quimby KR, Fakunle E, [Hambleton IR](#), Landis RC. Paradoxical inhibition of the haemoglobin scavenging mechanism in sickle cell disease. *Br J Haematol*. 2011 April;153(suppl 1):40

(80) Hennis AJ, [Hambleton IR](#), Wu S-Y, Skeete DH, Nemesure B, Leske C. Prostate cancer incidence and mortality in Barbados, West Indies. *Prostate Cancer*, 2011 [epub].

(79) Marshall KG, Swaby K, Hamilton K, Howell S, Landis C, [Hambleton IR](#), Reid M, Fletcher H, Forrester T, McKenzie C. A preliminary examination of the effects of genetics variants of redox enzymes on susceptibility to oedematous malnutrition and on percentage cytotoxicity in response to oxidative stress *in vitro*. *Annals of Tropical Paediatrics*. 2011, 31, 27-36.

(78) Serjeant GR, Serjeant BE, Fraser RA, [Hambleton IR](#), Higgs DR, Kulozik AE, Donaldson A. Hb S-β-Thalassaemia: Molecular, Haematological, and Clinical Comparisons. *Hemoglobin*. 2011, 35 (1): 1-12.

2010

(77) Smeeton NC, Corbin DOC, Hennis AJ, [Hambleton IR](#), Rose AMC, Fraser H, Heuschmann PU, Wolfe CDA. A comparison of outcome for stroke patients in Barbados and South London. *International Journal of Stroke*. 2010, 6, 112-117.

(76) Valley A, [Hambleton IR](#), Kasindi S, Knight L, Francis SC, Chirwa T, Everett D et al. Microbicides Development Programme, Tanzania: Are women who work in bars, guesthouses and similar facilities a suitable study population for clinical trials of vaginal microbicide trials in Africa? *PLoS One*, 2010 5(5): e10661.

(75) Everett D, Baisely K, McNERNEY R, [Hambleton IR](#), Chirwa T, Ross D, Changalucha J, Watson-Jones D, Helmy H, Dunne D, Mabey D, Hayes R. Association of schistosomiasis with false positive HIV test results in an African adolescent population. *Journal of Clinical Microbiology*. 2010, 1570-1577.

2009

(74) Tennant I, Augier R, Crawford-Sykes A, [Hambleton I](#), Win Tha M, Harding H. Anesthetic morbidity in a developing country: A prospective cross-sectional study from Jamaica. *West Indian Med J*. 2009 Nov; 58(5): 452-9.

(73) Jones JK, Gill L, John M, Goddard M, [Hambleton IR](#). Outcome analysis of surgery for Blount disease. *J Pediatr Orthop*. 2009 Oct-Nov;29(7):730-5.

(72) Simms-Stewart D, Thame M, Heman-Keens A, [Hambleton IR](#), Serjeant GR. Retained placenta – a complication of pregnancy in homozygous sickle cell disease. *Obstet Gynecol*. 2009 Oct;114(4):825-8.

(71) Watson-Jones DI, Baisley K, Rusizoka M, Tanton C, Mugeye K, Weiss HA, Changalucha J, Clayton T, [Hambleton IR](#), Ross D, Hayes R. Measurement and predictors of adherence in a trial of HSV suppressive therapy in Tanzania. *Contemp Clin Trials*. 2009 Nov;30(6):504-12

(70) McKenzie C, Hanchard N, Harding R, [Hambleton I](#), Modell B. Rate of change of sickle allele frequency may be influenced by total fertility rate: a sesquicentenary reflection on human micro-evolution. *Br J Haematol*. 2009 Aug 02 [Epub ahead of print]

(69) Marshall ML, Bucks RS, Hogan AM, [Hambleton IR](#), Deane C, Goss D, Height S, Dick M, Kirkham F, Rees D. Auto-adjusting positive airways pressure in children with sickle cell anemia: results of a phase I randomized controlled trial. *Haematologica*. 2009 Jul;94(7): 1006-10.

(68) Baisley K, Changalucha J, Weiss H, Mugeye K, Everett D, **Hambleton IR**, Hay P, Ross D, Tanton C, Chirwa T, Hayes R, Watson-Jones D. Bacterial vaginosis in female facility workers in north-western Tanzania: prevalence and risk factors. *Sexually Transmitted Infections*. 2009 May 26 [Epub ahead of print].

(67) Smeeton NC, Corbin DO, Hennis AJ, **Hambleton IR**, Fraser HS, Wolfe CD, Heuschmann PU. A comparison of acute and long-term management of stroke patients in Barbados and South London. *Cerebrovasc Dis*. 2009;27(4):328-35.

(66) Creary LE, McKenzie CA, Menzel S, Hanchard NA, Taylor V, **Hambleton I**, Spector TD, Forrester TE, Thein SL. Ethnic differences in F cell levels in Jamaica: a potential tool for identifying new genetic loci controlling fetal haemoglobin. *Br J Haematol*. 2009 Mar;144(6):954-60.

(65) **Hambleton IR**, Jonnalagadda R, Davis CR, Fraser HS, Chaturvedi N, Hennis AJ. All-cause mortality after diabetes-related amputation in Barbados: a prospective case-control study. *Diabetes Care*. 2009 Feb;32(2):306-7.

(64) Smeeton NC, Corbin DO, Hennis AJ, **Hambleton IR**, Fraser HS, Wolfe CD, Heuschmann PU. Differences in risk factors between black Caribbean patients with stroke in Barbados and South London. *Stroke*. 2009 Feb;40(2):640-3.

(63) Nemesure B, Wu SY, **Hambleton IR**, Leske MC, Hennis AJ. Risk factors for breast cancer in a black population-The Barbados National Cancer Study. *Int J Cancer*. 2009 Jan 1;124(1):174-9.

(62) Hennis AJ, **Hambleton IR**, Wu SY, Leske MC, Nemesure B. Breast cancer incidence and mortality in a Caribbean population: Comparisons with African-Americans. *Int J Cancer*. 2009 Jan 15;124(2):429-33.

2008

(61) Le Franc E, Samms-Vaughan M, **Hambleton I**, Fox K, Brown D. Interpersonal violence in three Caribbean countries: Barbados, Jamaica, and Trinidad and Tobago. *Rev Panam Salud Publica*. 2008 Dec;24(6):409-421.

(60) Serjeant GR, Serjeant BE, Mason KP, **Hambleton IR**, Fisher C, Higgs DR. The changing face of homozygous sickle cell disease: 102 patients over 60 years. *Int J Lab Hematol*. 2009 Dec;31(6):585-96.

(59) Edwards CN, Griffith SG, Hennis AJ, **Hambleton IR**. Inflammatory bowel disease: Incidence, prevalence, and disease characteristics in Barbados, West Indies. *Inflamm Bowel Dis*. 2008 May 17. [Epub ahead of print]

(58) Evans BJ, Haskard DO, Finch JR, **Hambleton IR**, Landis RC, Taylor KM. The inflammatory effect of cardiopulmonary bypass on leukocyte extravasation in vivo. *J Thorac Cardiovasc Surg*. 2008 May;135(5):999-1006.

(57) Rose AM, Hennis AJ, **Hambleton IR**. Sex and the city: differences in disease- and disability-free life years, and active community participation of elderly men and women in 7 cities in Latin America and the Caribbean. *BMC Public Health*. 2008 Apr 21;8(1):127

(56) Watson-Jones D, Weiss HA, Rusizoka M, Changalucha J, Baisley K, Mugeye K, Tanton C, Ross D, Everett D, Clayton T, Balira R, Knight L, **Hambleton I**, Le Goff J, Belec L, Hayes R. Effect of Herpes Simplex Suppression on Incidence of HIV among Women in Tanzania. *N Engl J Med*. 2008; 358(15):1560-71

(55) Weller PD, **Hambleton IR**, Chambers C, Bain S, Christie CDC, Bain B. Voices of the women: Feedback from women of child-bearing age who are living with HIV can help improve efficacy of psychosocial interventions. *West Indian Med J* 2008; 57 (3): 274-81.

2007

(54) Thame M, Lewis J, Trotman H, **Hambleton I**, Serjeant G. The mechanisms of low birth weight in infants of mothers with homozygous sickle cell disease. *Pediatrics*. 2007 Sep;120(3):e686-93.

(53) Vallely A, Kasindi S, [Hambleton IR](#), Knight L, Chirwa T, Balira R, Changanlucha J, Watson-Jones D, Everett D, Gavyole A, Moyes J, Pujades-Rodriguez M, Ross DA, Hayes RJ. Microbicides development program, Tanzania-baseline characteristics of an occupational cohort and reattendance at 3 months. *Sex Transm Dis.* 2007 Sep;34(9):638-43.

(52) Allen CF, Lees SS, Desmond NA, Der G, Chiduo B, [Hambleton I](#), Knight L, Vallely A, Ross DA, Hayes RJ. Validity of coital diaries in a feasibility study for the Microbicides Development Programme trial among women at high risk of HIV/AIDS in Mwanza, Tanzania. *Sex Transm Infect.* 2007 Oct;83(6):490-6; discussion 496-7.

(51) Thompson J, Reid M, [Hambleton I](#), Serjeant GR. Albuminuria and renal function in homozygous sickle cell disease: observations from a cohort study. *Arch Intern Med.* 2007 Apr 9;167(7):701-8.

(50) Serjeant GR, Higgs DR, [Hambleton IR](#). Elderly survivors with homozygous sickle cell disease. *N Engl J Med.* 2007 Feb 8;356(6):642-3.

2006

(49) Kalra L, Rambaran C, Iveson E, Chowienczyk PJ, [Hambleton I](#), Ritter JM, Shah A, Wilks R, Forrester T. The role of inheritance and environment in predisposition to vascular disease in people of African descent. *J Am Coll Cardiol.* 2006 Mar 21;47(6):1126-33.

(48) Hennis A, [Hambleton I](#), Fraser H, Tulloch-Reid M, Barcelo A, Hassell T. Risk factors for cardiovascular disease in the elderly in Latin America and the Caribbean. *Prevention and Control.* 2006 Dec;2(4): 175-185

(47) Samms-Vaughan M, Thame M, Osmond C, [Hambleton IR](#), McCaw-Binns A, Ashley DE, Serjeant GR. Growth curves for normal Jamaican neonates. *West Indian Med J.* 2006 Dec;55(6):368-74.

(46) Eck C, Pierre RB, [Hambleton IR](#). Medical paediatric admission patterns at the University Hospital of the West Indies: issues for future planning. *West Indian Med J.* 2006 Oct;55(5):340-5.

(45) Knight-Madden J, Lewis N, [Hambleton IR](#). The prevalence of marijuana smoking in young adults with sickle cell disease: a longitudinal study. *West Indian Med J.* 2006 Sep;55(4):224-7.

(44) Flower C, Hennis A, [Hambleton IR](#), Nicholson G. Lupus nephritis in an Afro-Caribbean population: renal indices and clinical outcomes. *Lupus.* 2006;15(10):689-94.

(43) Wierenga KJ, [Hambleton IR](#). Comment on: Loureiro & Rozenfeld "Epidemiology of sickle cell disease hospital admissions in Brazil". *Rev Saude Publica.* 2006 Aug;40(4):740-1

(42) Hanchard NA, [Hambleton I](#), Harding RM, McKenzie CA. Predicted declines in sickle allele frequency in Jamaica using empirical data. *Am J Hematol.* 2006 Nov;81(11):817-23.

(41) Carter AO, [Hambleton IR](#), Broome HL, Fraser HS, Hennis AJ. Prevalence and risk factors associated with obesity in the elderly in Barbados. *J Aging Health.* 2006 Apr;18(2):240-58.

2005

(40) Crawford-Sykes A, Scarlett M, [Hambleton IR](#), Nelson M, Rattray C. Anaesthesia for operative deliveries at the University Hospital of the West Indies: a change of practice. *West Indian Med J.* 2005 Jun;54(3):187-91.

(39) Augier R, [Hambleton IR](#), Harding H. Triage decisions and outcome among the critically ill at the University Hospital of the West Indies. *West Indian Med J.* 2005 Jun;54(3):181-6.

(38) Downes SM, [Hambleton IR](#), Chuang EL, Lois N, Serjeant GR, Bird AC. Incidence and Natural History of Proliferative Sickle Cell Retinopathy Observations from a Cohort Study. *Ophthalmology*. 2005 Sep 17; [Epub ahead of print]

(37) Hanchard NA, [Hambleton I](#), Harding RM, McKenzie CA. The frequency of the sickle allele in Jamaica has not declined over the last 22 years. *Br J Haematol*. 2005 Sep;130(6):939-42.

(36) Kalra L, Rambaran C, Chowienczyk P, Goss D, [Hambleton I](#), Ritter J, Shah A, Wilks R, Forrester T. Ethnic Differences in Arterial Responses and Inflammatory Markers in Afro-Caribbean and Caucasian Subjects. *Arterioscler Thromb Vasc Biol*. 2005 Aug 25

(35) Serjeant GR, [Hambleton I](#), Thame M. Fecundity and pregnancy outcome in a cohort with sickle cell-haemoglobin C disease followed from birth. *BJOG*. 2005 Sep;112(9):1308-14.

(34) [Hambleton IR](#), Clarke K, Broome H, Fraser H, Braithwaite F, Hennis A. Historical and current predictors of self-reported health status in elderly Barbadians. *Rev Panam Salud Publica*. 2005. May-Jun; 17(5-6): 342-352

2004

(33) [Hambleton IR](#), Wierenga KJJ. Identifying homozygous sickle-cell disease when neonatal screening is not available: a clinic-based observational study. *J Med Screen*. 2004; 11: 175-179.

(32) Rodriguez B, Steel-Duncan JC, Pierre R, Evans-Gilbert T, [Hambleton I](#), Palmer P, Figueroa JP, Christie CDC. Socio-demographic characteristics of HIV-exposed and HIV-infected Jamaican children. *West Indian Med J*, 2004; 53, 5: 303-307.

(31) Steel-Duncan JC, Pierre R, Evans-Gilbert T, Rodriguez B, Smikle MF, Palmer P, Whorms S, [Hambleton I](#), Figueroa JP, Christie C. Uptake of interventions, Outcomes, and Challenges in caring for HIV-exposed Infants in Kingston, Jamaica. *West Indian Med J*, 2004; 53, 5: 308-314.

(30) Pierre R, Steel-Duncan JC, Evans-Gilbert T, Rodriguez B, Palmer P, Smikle MF, Whorms S, [Hambleton I](#), Figueroa JP, Christie CDC. CDC-defined Diseases and Opportunistic Infections in Jamaican children with HIV/AIDS. *West Indian Med J*, 2004; 53, 5, 315-321.

(29) Evans-Gilbert T, Pierre R, Steel-Duncan J, Rodriguez B, Whorms S, [Hambleton IR](#), Figueroa JP, Christie CDC. Antiretroviral Drug Therapy in HIV-infected Jamaican Children. *West Indian Med J*, 2004; 53, 5, 322-326.

(28) Geoghagen M, Farr JA, [Hambleton I](#), Pierre R, Christie CDC. Tuberculosis and HIV Co-infections in Jamaican children. *West Indian Med J*, 2004; 53, 5, 339-345.

(27) Crawford-Sykes A, Chin D, [Hambleton IR](#). Paravertebral anaesthesia for breast surgery: an initial experience at the University Hospital of the West Indies. *West Indian Med J*, 2004; 53(3): 174-77

(26) Serjeant GR, Look Loy L, Crowther M, [Hambleton IR](#), Thame M. Outcome of pregnancy in homozygous sickle cell disease: observations from the Jamaican Cohort Study. *Obstet Gynecol*, 2004, 103(6); 1278-1285.

(25) Brandelise S, Pinheiro V, Gabetta CS, [Hambleton I](#), Serjeant B, Serjeant G. Newborn screening for sickle-cell disease in Brazil: the Campinas experience. *Clin Lab Haem*. 2004, 26, 15-19.

2003

(24) Knight-Madden J, [Hambleton IR](#). Bronchodilators for acute chest syndrome in people with sickle-cell disease. *Cochrane Database Syst Rev*. 2003;(3).

2002

(23) Clare A, FitzHenley M, Harris J, **Hambleton IR**, Serjeant GR. Chronic leg ulceration in homozygous sickle-cell disease: a role of venous incompetence. *Br J Haematol*. 2002; 199(2): 567-71

(22) Evans-Gilbert T, **Hambleton I**, McKenzie CA, Samms-Vaughan M. Paediatric hiv/aids in Jamaica: A hospital-based description. *West Indian Med J*. 2002; 51(2): 74-9

2001

(21) Serjeant BE, **Hambleton IR**, Kerr S, Kilty C, Serjeant GR. Haematological response to parvovirus B19 infection in homozygous sickle-cell disease. *Lancet*. 2001 Nov 24;358(9294):1779-1780.

(20) Serjeant GR, Singhal A, **Hambleton IR**. Sickle cell disease and age at menarche in Jamaican girls: observations from a cohort study. *Arch Dis Child*. 2001 Nov;85(5):375-8.

(19) Crawford-Sykes AM, **Hambleton IR**. Patients' desire for peri-operative information: Jamaican attitudes. *West Indian Med J*. 2001 Jun;50(2):159-63.

(18) Olujuhunge A, **Hambleton I**, Stephens L, Serjeant B, Serjeant G. Red cell antibodies in patients with homozygous sickle cell disease: a comparison of patients in Jamaica and the United Kingdom. *Br J Haematol*. 2001 Jun;113(3):661-5.

(17) Thomas VJ, **Hambleton I**, Serjeant G. Psychological distress and coping in sickle cell disease: comparison of British and Jamaican attitudes. *Ethn Health*. 2001 May;6(2):129-36.

(16) Wierenga KJ, **Hambleton IR**, Lewis NA. Survival estimates for patients with homozygous sickle-cell disease in Jamaica: a clinic-based population study. *Lancet*. 2001 Mar 3;357(9257):680-3.

(15) Wierenga KJ, **Hambleton IR**, Wilson RM, Alexander H, Serjeant BE, Serjeant GR. Significance of fever in Jamaican patients with homozygous sickle cell disease. *Arch Dis Child*. 2001 Feb;84(2):156-9.

(14) Thame JR, **Hambleton IR**, Serjeant GR. RBC transfusion in sickle cell anemia (HbSS): experience from the Jamaican Cohort Study. *Transfusion*. 2001 May;41(5):596-601.

2000

(13) Mohan JS, Vigilance JE, Marshall JM, **Hambleton IR**, Reid HL, Serjeant GR. Abnormal venous function in patients with homozygous sickle cell (SS) disease and chronic leg ulcers. *Clin Sci (Lond)*. 2000 Jun;98(6):667-72.

(12) Foster-Williams K, **Hambleton IR**, Hilton C, Serjeant GR. Psychological distress among younger siblings of patients with homozygous sickle cell disease in the Jamaican cohort study. *West Indian Med J*. 2000 Mar;49(1):52-4.

(11) Walker TM, **Hambleton IR**, Serjeant GR. Gallstones in sickle cell disease: observations from The Jamaican Cohort study. *J Pediatr*. 2000 Jan;136(1):80-5.

1999

(10) Magnus SA, **Hambleton IR**, Moosdeen F, Serjeant GR. Recurrent infections in homozygous sickle cell disease. *Arch Dis Child*. 1999 Jun;80(6):537-41.

(09) Wright JG, **Hambleton IR**, Thomas PW, Duncan ND, Venugopal S, Serjeant GR. Postsplenectomy course in homozygous sickle cell disease. *J Pediatr*. 1999 Mar;134(3):304-9.

(08) Ware MA, Hambleton I, Ochaya I, Serjeant GR. Day-care management of sickle cell painful crisis in Jamaica: a model applicable elsewhere? Br J Haematol. 1999 Jan;104(1):93-6.

1998

(07) Mohan J, Marshall JM, Reid HL, Thomas PW, Hambleton I, Serjeant GR. Peripheral vascular response to mild indirect cooling in patients with homozygous sickle cell (SS) disease and the frequency of painful crisis. Clin Sci (Lond). 1998 Feb;94(2):111-20.

(06) Mohan JS, Marshall JM, Reid HL, Thomas PW, Hambleton I, Serjeant GR. Comparison of responses evoked by mild indirect cooling and by sound in the forearm vasculature in patients with homozygous sickle cell disease and in normal subjects. Clin Auton Res. 1998 Feb;8(1):25-30.

(05) Hambleton IR, Foster WH, Richardson JTE. Improving student learning using the personalised system of instruction. Higher Education 1998; 35: 187-203.

1997

(04) Farmer RD, Lawrenson RA, Thompson CR, Kennedy JG, Hambleton IR. Population-based study of risk of venous thromboembolism associated with various oral contraceptives. Lancet. 1997 Jan 11;349(9045):83-8.

(03) Lawrenson R, Rohde J, Bott C, Hambleton I. Trends in the need for services for people with learning disabilities: implications for primary care. Health Trends 1997; 29: 37-41.

1996

(02) Tyrer F, Hambleton I, Lawrenson R, Pierce M. The value of computerised general practice data in building a research database. Journal of Medical Informatics in Primary Care Sep; 1996

(01) Farmer RD, Lawrenson RA, Hambleton IR. Oral contraceptive switching patterns in the United Kingdom: an important potential confounding variable in studies of venous thromboembolism. Eur J Contracept Reprod Health Care. 1996 Mar-May;1(1):31-7.

D. Non-refereed Academic output

I have published 88 technical reports and book chapters (5 since 2020, 15 since 2018, 25 since 2016), and given 104 oral presentations and posters at international academic conferences (18 since 2020, 21 since 2018, and 36 since 2016).

Since April 2020, I have produced daily COVID-19 surveillance reports for the 20 CARICOM member states, along with regional summaries and free for use slide sets. I have produced 23 reports per day – **or over 650 reports per month** – with circulation (via UWI, and regional agencies) across the Caribbean.

I have provided methodological contributions to the influential International Diabetes Federation Global Diabetes Atlas (Edition 6 published in 2013, Edition 7 published in 2015, and Edition 8 published in 2017).

COVID-19 regional surveillance outputs. In March 2020, the Barbados Ministry of Health and Wellness asked The University of the West Indies for evidence to help the planning of a government response to the emerging COVID-19 outbreak. From this first request, I have provided evidence-based support to the Barbados government, and the wider CARICOM region. This has included advice on possible national interventions and on emergency public health process planning, backed up by statistical modelling and daily outbreak surveillance. I work closely with the Caribbean Disaster Emergency Management Agency (CDEMA) to provide technical support and surveillance updates to CARICOM member states. Since April 2020, I have produced 23 reports per day – **or over 650 reports per month** – with circulation (via UWI, and regional agencies) across the Caribbean. For daily surveillance outputs, see online surveillance website: <https://ianhambleton.com/covid19>. Additionally, I have presented surveillance updates to regional government planning meetings since April 2020 (twice monthly regional meetings), and have also published peer-reviewed outputs on aspects of the COVID-19 outbreak in the US and the Caribbean.

- a. For daily surveillance outputs, see online surveillance website: <https://ianhambleton.com/covid19>
- b. Pathak EB, Salemi JL, Sobers N, Menard J, **Hambleton IR**. COVID-19 in Children in the United States: Intensive Care Admissions, Estimated Total Infected, and Projected Numbers of Severe Pediatric Cases in 2020. *J Public Health Manag Pract*. 2020 Jul/Aug;26(4):325-333. doi: 10.1097/PHH.0000000000001190.
- c. **Hambleton IR**, Jeyaseelan SM, Murphy MM. COVID-19 in the Caribbean small island developing states: lessons learnt from extreme weather events. *Lancet Glob Health*. 2020 Jul 2:S2214-109X(20)30291-6. doi: 10.1016/S2214-109X(20)30291-6.
- d. Murphy MM, Jeyaseelan SM, Howitt C, Greaves N, Harewood H, Quimby KR, Sobers N, Landis RC, Rocke KD, **Hambleton IR**. COVID-19 containment in the Caribbean: The experience of Small Island developing states. *Research in Globalization*. doi: <https://doi.org/10.1016/j.resglo.2020.100019>.
- e. Sobers NP, Howitt CH, Jeyaseelan SM, Greaves NS, Harewood H, Murphy MM, Quimby K, **Hambleton IR**. Impact of COVID-19 contact tracing on human resources for health - A Caribbean perspective. *Prev Med Rep*. 2021 Jun;22:101367. doi: 10.1016/j.pmedr.2021.101367. Epub 2021 Apr 3. PMID: 33842202; PMCID: PMC8019353.
- f. Evans-Gilbert T, Lashley PM, Lerebours E, Sin Quee C, Singh-Minott I, Fernandes M, Thomas JW, Nelson B, Braithwaite J, **Hambleton I**. Children and the coronavirus disease 2019 pandemic: a Caribbean perspective. *Rev Panam Salud Publica*. 2022 Aug 30;46:e135. doi: 10.26633/RPSP.2022.135. PMID: 36060198; PMCID: PMC9426950.

Book Chapters and External Technical Reports

2021

(88) Pan-American Health Organization. CE168/11 - Policy on the Application of Data Science in Public Health Using Artificial Intelligence and Other Emerging Technologies. May 2021. (**Hambleton I.** Member of writing committee)

(87) Pan-American Health Organization. Artificial Intelligence in Public Health. PAHO/EIH/IS/21-011. <https://iris.paho.org/handle/10665.2/53732> (**Hambleton I.** Member of writing committee)

2020

(86) **Hambleton IR**, MM Murphy, N Sobers, K Quimby, N Greaves, H Harewood. Briefing on process planning for the Ministry of Health and Wellness for COVID-19 stages 2 & 3 (Disaster Management Risk Framework for COVID-19 in the Caribbean) subsequently shared with CDEMA. May 2020.

(85) **Hambleton IR**, MM Murphy, N Sobers, K Quimby, N Greaves, H Harewood. Evidence briefs on Non-Pharmaceutical Interventions for the Ministry of Health and Wellness. 22-March-2020

(84) **Hambleton IR**. SEIR (Susceptible, Exposed, Infected, Recovered) stochastic model to estimate number of possible COVID-19 cases, hospitalisations, and deaths in Barbados. March 2020. For Barbados Ministry of Health and Wellness.

2019

(83) T Oni, **IR Hambleton**. Global Diet and Activity Research Programme. Data Management Plan. Version 1, created February 2019. NIHR Global Health Research Group on Diet and Physical Activity (Grant number: 16/137/34)

(82) **IR Hambleton**, S Jeyaseelan. Survey on data sharing practices and attitudes among participants at the 64th annual CARPHA Health Research Conference: Analysis report. Created July 2019. Conference location: Hilton Trinidad and Conference Centre, Trinidad and Tobago June 20–22, 2019.

(81) **IR Hambleton**, S Jeyaseelan, B Collins, P Anglin, K-S Davis, S Harris, C Gittens. A practical guide to protecting your research data (with limited resources). Submitted to CANREC Bulletin in June 2019. CANREC is the Caribbean Network of Research Ethics Committees

(80) A King, C Altenor, C Brown, **I Hambleton**. The health of people living with lupus is shaped by social inequalities: lupus incidence and outcomes in a Caribbean small island developing state. Report prepared for guiding Lupus policy in Saint Lucia. Report released May 2019.

(79) **I Hambleton**, J Knight-Madden. Mapping the research projects at the Caribbean Institute for Health research (CAIHR) onto 14 Research Programmes and 3 Research themes. A visual representation. Released May 2019.

(78) **IR Hambleton**. The Data group at the George Alleyne Chronic Disease Research Centre: Facilities Document and a proposal for a data collection and data sharing infrastructure at the Cave Hill campus. Version 1, July 2019.

2018

(77) A Best, T Blackman, M Chase, S Chrichlow, **I Hambleton**, T Volkmann. Barbados HIV Surveillance Bulletin 2016. Barbados Ministry of Health and Wellness. Released Oct 5, 2018.

(76) A Rose, J Campbell, S Forde, **I Hambleton**, N Greaves, P Prussia . Cancer in Barbados 2013: Annual report of the BNR-Cancer. The University of the West Indies, St Michael, Barbados. Released June 2018.

(75) Rose AMC, Maul L, **Hambleton IR**, Campbell J, Henry ARP, Wilkinson SA, King J and the BNR-CVD Surveillance Team. The Barbados National Registry. Cardiovascular Disease Annual Report 2016. The University of the West Indies, Cave Hill, Barbados. Released June 2018.

(74) **I Hambleton**, M Alvarado, C Howitt. Population aging across 20 Caribbean countries: Examining implications for CVD/diabetes morbidity and mortality. Statistical Report created June 2018.

2017

(73) Rose AMC, Martelly TN, Maul L, **Hambleton IR**, Henry ARP, and the BNR-CVD Surveillance Team. The Barbados National Registry. Cardiovascular Disease Annual Report 2015. The University of the West Indies, Cave Hill, Barbados. Released June 2017.

(72) International Diabetes Federation. IDF Diabetes Atlas, 8th edn. Brussels, Belgium: International Diabetes Federation, October 2017. <http://www.idf.org/diabetesatlas>.

(71) Gittens C, Gittens M, Hoyte N, **Hambleton IR**, Jeyasselan SM. Team Driven: Why Did You Stop? Using Virtual Patients to Reduce Nonadherence of Diabetic Patients to Healthy Lifestyle Habits. Submission to IBM Watson AI X-Prize. <https://ai.xprize.org/>. September 2017.

(70) System Science for Caribbean health. Group model building workshop report. Kingston, Jamaica, Dec 13-14, 2016 (report created Jan 27, 2017)

(69) Rose A, **Hambleton I**. Quality of life after cardiovascular events in Barbados. BNR briefing report 3. Jan 2017.

(68) Rose A, **Hambleton I**. Cost of cardiovascular disease (CVD) in Barbados. BNR briefing report 2. Jan 2017.

2016

(67) Rose AMC, Craig LS, Martelly TN, Maul L, **Hambleton IR**, Hennis AJM, and the BNR-CVD Surveillance Team. The Barbados National Registry. Cardiovascular Disease Annual Report 2014. The University of the West Indies, Cave Hill, Barbados. Released June 2016.

(66) SHTP Core team and **Hambleton IR**. Global Standardized Hypertension Protocol: Barbados pilot study. Findings (v3.1, July-2016)

(65) **Hambleton IR**. Global Standardized Hypertension Protocol: Barbados pilot study. Analysis report (v3.0, 21-Jun-2016)

(64) **Hambleton IR**. Inter-Personal Violence and Aggression (IPVA) in relationships in three Caribbean countries: Barbados, Jamaica and Trinidad. Analysis report (v4.0, 18-Apr-2016)

2015

(63) International Diabetes Federation. IDF Diabetes Atlas, 7th edn. Brussels, Belgium: International Diabetes Federation, 2015. <http://www.idf.org/diabetesatlas>.

(62) Best A, Chrichlow S, **Hambleton I**. The Barbados HIV/AIDS Surveillance Report 2012. HIV/AIDS Programme, Ministry of Health, Government of Barbados, July 2015.

(61) Unwin N, Rose A, George K, **Hambleton I**, Howitt, C. The Barbados Health of the Nation Survey. Core Findings. 2015. The University of the West Indies, Cave Hill, Barbados, 2015.

(60) Rose AMC, Craig LS, Martelly TN, Maul L, **Hambleton IR**, Hennis AJM, and the BNR-CVD Surveillance Team. The Barbados National Registry. Cardiovascular Disease Annual Report 2012-2013. The University of the West Indies, Cave Hill, Barbados. 2015.

(59) **Hambleton IR**. Disparities in Life Expectancy in the Caribbean. Briefing report. July 2015.

(58) **Hambleton IR**. National Youth Knowledge Attitudes Behaviours and Practices (KABP) Surveys on HIV: Trends in World bank Indicators (2009-2013). 2015

(57) **Hambleton IR**. National Youth Knowledge Attitudes Behaviours and Practices (KABP) Surveys on HIV: Trends in Family Health International Indicators (2009-2013). 2015

(56) **Hambleton IR**. 2013 National Youth Knowledge Attitudes Behaviours and Practices (KABP) Survey on HIV: Fact Sheet. 2015

(55) **Hambleton IR**. 2011 National Youth Knowledge Attitudes Behaviours and Practices (KABP) Survey on HIV: Fact Sheet. 2015

(54) **Hambleton IR**. 2009 National Youth Knowledge Attitudes Behaviours and Practices (KABP) Survey on HIV: Fact Sheet. 2015

2014

(53) **Hambleton IR**, Allen C, Quimby K. Exploring Inter-Personal Violence and Aggression within relationships in three Caribbean countries. 2014

2013

(52) International Diabetes Federation. IDF Diabetes Atlas, 6th edn. Brussels, Belgium: International Diabetes Federation, 2013. <http://www.idf.org/diabetesatlas>.

(51) **Hambleton I**. Dengue cases in Barbados (2004 – 2013), and the association with meteorological variables. Pan-American Health Organization. 2013.

(50) Taylor C, **Hambleton IR**. Understanding the transition into the final year clerkships, does anxiety differ? CDRC Technical Report, 2013 (analysis report).

(49) **Hambleton IR**. Trends in Caribbean longevity: country-level disparities in life expectancy and comparisons with other world regions. COLLABORATORS: On behalf of the US-Caribbean Health Disparities Consortium. CDRC Technical Report, 2013 (analysis report).

(48) **Hambleton IR**. Mortality in African-descent populations in the US and Caribbean. COLLABORATORS: On behalf of the US-Caribbean Health Disparities Consortium. CDRC Technical Report, 2013 (analysis report).

(47) **Hambleton IR**. Monitoring regional disparities in mortality: benchmarking the African descent Caribbean to African-Americans. COLLABORATORS: On behalf of the US-Caribbean Health Disparities Consortium. CDRC Technical Report, 2013 (analysis report).

(46) **Hambleton I**. Disparities in tobacco use among Caribbean youth: a re-analysis of the Global Youth Tobacco Surveys. COLLABORATORS: On behalf of the US-Caribbean Health Disparities Consortium. CDRC Technical Report, 2013 (analysis report).

(45) **Hambleton IR**, Serjeant G. Iron deficiency among Jamaican adolescents: analysis report. CDRC Technical Report, 2013 (analysis report).

(44) Morey F, **Hambleton IR**, Samuels A. Social determinants of premature mortality 2008-2010, among the working age population 15 – 59 years in Belize, a middle income country. FMS / CDRC Technical Report, 2013 (analysis report).

(43) **Hambleton IR**. Health disparities among the elderly in Latin American and the Caribbean: an analysis of the SABE survey. COLLABORATORS: On behalf of the US-Caribbean Health Disparities Consortium. CDRC Technical Report, 2013 (analysis report).

(42) **Hambleton I**. Country-level disparities in mortality and life expectancy in the Caribbean: an ecological analysis. COLLABORATORS: On behalf of the US-Caribbean Health Disparities Consortium. CDRC Technical Report, 2013 (analysis report).

2012

(41) Rose A, Blackman T, Pitts G, Maul L, Hennis A, **Hambleton I**. The Barbados National Registry for chronic non-communicable disease: Annual Report (Stroke and AMI) 2010 data. Published 2012.

(40) Best A, Chrichlow S, Burrowes S, **Hambleton I**. The Barbados HIV/AIDS Surveillance Report 2010. HIV/AIDS Programme, Ministry of Health, Government of Barbados, July 2012.

(39) Adomakoh S, Allen C, **Hambleton I**. Stigma and discrimination interventions in the Caribbean: validation of the SCOR-B questionnaire. 2012.

(38) Rose A, Unwin N, Howitt C, **Hambleton I**. Health of the Nation National Survey 2012. Study Operations Manual.

(37) **Hambleton I**. Transactional and Inter-Generational Sex with Older Men (TIGSex): A Survey of Barbadian Girls aged 15-19. Analysis report. COLLABORATORS: Landis C, Drakes N, Quimby K, Perks C. CDRC Technical Report, 2012 (analysis report).

(36) **Hambleton I**. Diabetes audit at the Queen Elizabeth Hospital, Barbados. COLLABORATOR: Taylor C (UWI, Cave Hill). CDRC Technical Report, 2012 (analysis report).

(35) **Hambleton I.** Splenomegaly in homozygous sickle cell disease. COLLABORATOR: Serjeant G (UWI, Mona). CDRC Technical Report, 2012 (analysis report).

2011

(34) **Hambleton I.** The association of particulate matter measurements with selected spirometry and self-reported asthma symptoms during a pilot study in Barbados (2010-11). COLLABORATOR: McCormack M (Johns Hopkins). CDRC Technical Report, 2011 (analysis report).

(33) **Hambleton I.** McKenzie C, Dawson S. Nutritional Supplementation among people living with HIV (PLHIV): a randomized controlled trial. COLLABORATOR: McKenzie C (UWI, Mona). CDRC Technical Report, 2011 (analysis report).

(32) **Hambleton I.** The relationship between childhood asthma and African dust. COLLABORATOR: Blades E (UWI, Cave Hill). CDRC Technical Report, 2011 (analysis report).

(31) **Hambleton I.** Mild disease expression in people with homozygous sickle cell disease. COLLABORATOR: McKenzie C (UWI, Mona). CDRC Technical Report, 2011 (analysis report).

(30) **Hambleton I.** Systemic Lupus Erythematosus in a Caribbean population: incidence, clinical manifestations and survival in the Barbados National Lupus Registry. COLLABORATOR: Hennis A, Flower C (UWI, Cave Hill). CDRC Technical Report, 2011 (analysis report).

(29) **Hambleton I.** Haematological changes in adolescence among Jamaican adolescents in Manchester, Jamaica. COLLABORATOR: Serjeant G (UWI, Mona). CDRC Technical Report, 2011 (analysis report).

(28) Smeeton N, **Hambleton I.** CDRC Analysis Report 2011. Differences in stroke incidence and the prior-to-stroke risk factors of patients in the white populations of Barbados and South London. COLLABORATOR: A Hennis (UWI, Cave Hill). CDRC Technical Report, 2011 (analysis report).

(27) **Hambleton I.** Incidence of Acute Myocardial Infarction: 1999 – 2008. COLLABORATOR: Rose A (UWI, Cave Hill). CDRC Technical Report, 2011 (analysis report).

(26) **Hambleton I.** Screening for sickle cell-beta thalassaemia in Manchester, Jamaica. COLLABORATOR: Serjeant G (UWI, Mona). CDRC Technical Report, 2011 (analysis report).

(25) **Hambleton I.** Homozygous sickle cell disease in Uganda and Jamaica: a comparison of bantu and benin haplotypes. COLLABORATOR: Serjeant G (UWI, Mona). CDRC Technical Report, 2011 (analysis report).

2010

(24) Rose A, Harewood R, Pitts G, Blackman T, Corbin D, Delice R, **Hambleton I.** Hennis A. Barbados National Registry for Chronic Non-communicable Disease: Stroke and Heart Annual Report 2009, published Sep 2010.

(23) Landis RC, **Hambleton IR.** Rose, AMC, Hennis, AJM. Scientific Review Report, Quinquennial Review (2006 – 2010). Chronic Disease Research Centre, Tropical Medicine Research Institute, The University of the West Indies. 2010.

(22) Jeyaseelan S, **Hambleton I.** Human Resources for Health (HRH) in the Eastern Caribbean: Dominica, Grenada, St. Lucia, and St. Vincent. Pan-American Health Organization. Washington DC, 2010.

(21) **Hambleton I.** Performance of a simplified grading systems for the diagnosis of bacterial vaginosis in an African setting. COLLABORATOR: Watson-Jones D (London School of Hygiene and Tropical Medicine, UK). CDRC Technical Report, 2010 (analysis report).

(20) **Hambleton I.** Greenidge A, Landis C. Plasmin Activation Of Glial Cells Through Protease-Activated Receptor (PAR)1. CDRC Technical Report, 2010 (analysis report).

(19) **Hambleton I.** Social networks and Interpersonal violence in three Caribbean islands: Barbados, Jamaica, and Trinidad. COLLABORATOR: LeFranc E (UWI, Mona). CDRC Analysis Report, 2010.

(18) **Hambleton I**. Hypertension drug regimes and awareness of treatment in an elderly hypertensive population: Findings from the Study of Health, Aging and Well-being (SABE) in Barbados, West Indies. COLLABORATOR Sobers-Grannum N (UWI, Cave Hill). CDRC Technical Report, 2010 (analysis report).

(17) **Hambleton I**. Leptospirosis incidence in Barbados (1980-2005) and its relationship to annual rainfall. COLLABORATOR: Gittens M (UWI, Cave Hill). CDRC Analysis Report, 2010.

(16) **Hambleton I**, C.Landis. Transactional and Inter-Generational Sex with Older Men (TIGSex Survey): A Survey Among Barbadian Girls aged 15-19. CDRC Technical Report, 2010 (analysis report).

(15) Quimby K, **Hambleton I**, C.Landis. CDRC Analysis Report 2010. Paradoxical inhibition of the haemoglobin scavenging mechanism in Sickle Cell Disease. CDRC Technical Report, 2010 (analysis report).

(14) Williams LE, **Hambleton IR**, Hennis A. Breast Cancer in Barbados: factors related to stage at diagnosis, disease progression and survival. COLLABORATORS: Williams L, Hennis AJ (UWI, Cave Hill). CDRC Technical Report, 2010 (analysis report).

(13) Hennis AJ, **Hambleton IR**, Chrichlow S. Anthropometric and metabolic predictors of pregnancy outcomes in a cohort of Afro-Caribbean women. COLLABORATOR: Hennis AJ (UWI, Cave Hill). CDRC Technical Report, 2010 (analysis report).

(12) **Hambleton I**. Do results from the Caribbean Advanced Proficiency Examination (CAPE) part I predict results attained on CAPE part II? Prepared for the Caribbean Examination Council (CXC) and the faculty of Medical Sciences, Cave Hill campus. Jan 2010.

2009

(11) Rose A, **Hambleton I**, Craig L, Hennis A, Hassell, T (eds). Report of the Caribbean Chronic Disease Conference: "A Healthy Caribbean 2008 – a wellness revolution conference. Chronic Disease Research Centre Technical Report 001, Bridgetown, 2009.

(10) Jeyaseelan S, **Hambleton I**. Human Resources for Health (HRH) in Barbados. Pan-American Health Organization. Washington DC, 2009.

(09) LeFranc E, **Hambleton I**, Atkinson U. Social marginalization among adolescents and youth in the Caribbean: cause for concern? CHRC News: Newsletter of the Caribbean Health Research Council. Issue 13, Jan 2009.

2008

(08) LeFranc E, **Hambleton I**, Atkinson U. Parenting practices, family structures and family exclusion among adolescents in Jamaica. UNICEF Technical Report, 2008.

2007

(07) **Hambleton I**, Hennis A. Epidemiological investigation of reported physical symptoms at The Louis Lynch Secondary School, Bridgetown, Barbados. Barbados Ministry of Education, 2007.

2006

(06) **Hambleton I** (contributor) Disease control in developing countries. Chapter 34: Inherited disorders of hemoglobin pp663-680. The World Bank / Oxford University Press, Washington 2006.

(05) Le Franc E, Samms-Vaughan M, **Hambleton I**, Fox K, Brown D. Migration, family structures and morbidity from external causes. The Wellcome Trust Technical Report, 2006.

2004

(04) Hennis A, **Hambleton I**, Health, Welfare and Aging in Bridgetown, Barbados. SABE 2000. Pan American Health Organization. Scientific and Technical Publication No. 611. Bridgetown, 2004.

2003

(03) Samms-Vaughn M, **Hambleton I**. A profile of the status of Jamaican pre-school children and their learning environments. Inter-American Development Bank. 2003.

(02) **Hambleton I**, Predicting losses sustained by coffee growers in the Blue Mountains due to severe weather events in November 2002. Government of Jamaica, Jamaica Coffee Board. 2003.

2001

(01) **Hambleton I**. Cognition among first year medical undergraduates. Faculty of Medical Sciences, Mona campus. 2001.

Conference and other Presentations

2022

(104) Evans-Gilbert, T.; Quee, C. S.; Lashley, P. M.; Knight-Madden, J.; Young-Peart, S.; Gilbert, B.; Fernandes, M.; Singh, V.; Hambleton, I. Vulnerable subpopulations in Caribbean children and adolescents hospitalized with COVID-19. *West Indian Medical Journal* ; 70(Supplement 1):38, 2022.

(103) André R. Greenidge, Kim R. Quimby, Angela M. C. Rose, Amy Speede, Ian R. Hambleton, Simon G. Anderson, R. Clive Landis. Direct healthcare services cost of non-healing diabetic foot wounds in an African origin population in Barbados. *Diabetic Medicine*. Volume39, Issue 6, June 2022 e14773. <https://doi.org/10.1111/dme.14773>.

(102) Kirsten Da Silva; Michelle Dowell; Eleonore Savatovsky; David Callender; Mike Campbell; Ian Hambleton; Hounsh Munshi; Alana L Grajewski; Dawn Grosvenor. Patterns of Pediatric Visual Impairment in the Public Sector of Barbados. *Investigative Ophthalmology & Visual Science* June 2022, Vol.63, 3386 – A0173. ARVO Annual Meeting.

(101) Michelle Dowell; Kirsten Da Silva; Hounsh Munshi; David Callender; Mike Campbell; **Ian Hambleton**; Eleonore Savatovsky; Alana L Grajewski; Dawn Grosvenor. Referral Patterns for Pediatric Eye Care within the Public Sector of Barbados. *Investigative Ophthalmology & Visual Science* June 2022, Vol.63, 3385 – A0172. ARVO Annual Meeting.

(100) L Foley, A Brugulat-Panés, J Woodcock, I Govia, **I Hambleton**. Socioeconomic and gendered inequities in travel behaviour in Africa: mixed-method systematic review and meta-ethnography. *SSM Annual Scientific Meeting* 7th September, 2022. *J Epidemiol Community Health* 76 (Suppl 1), A59-A60

2021

(99) Greaves Natalie S, Heather Harewood, Madhuvanti M. Murphy, Colette A. Cunningham-Myrie, Christina Howitt, Ian R. Hambleton, Selvi Jeyaseelan, Kim R. Quimby, Natasha Sobers, R. Clive Landis. Mitigating the Impact of the First Wave of the COVID-19 Pandemic in the Caribbean Community: The Essential Role of Multi-Sectoral Collaboration. *Journal of Eastern Caribbean Studies*, Vol. 46, No. 1, June 2021 - Online Publication.

(98) Divya Bhagtani, Eden Augustus, Emily Haynes, Arlette St Ville, Viliamu Iese, Jioje Fesaitu, Neela Badrie, Florian Kroll, Louise Foley, Ian Hambleton. Prevalence of food insecurity and its associations with socio-demographic factors, food sources and dietary diversity, in small island developing states. *J Epidemiol Community Health*, 75, Suppl 1, A52. <http://dx.doi.org/10.1136/jech-2021-SSMabstracts.111>.

(97) Eden Augustus, Divya Bhagtani, Emily Haynes, Arlette St Ville, Viliamu Iese, Jioje Fesaitu, Florian Kroll, Ian Hambleton, Sara Benjamin-Neelon, Nigel Unwin. Using latent class analysis to explore dietary patterns and their associations between sociodemographic characteristics, food sources, dietary diversity, and food insecurity in small island developing states. *SSM Annual Scientific Meeting*. *J Epid Community Health*. <http://dx.doi.org/10.1136/jech-2021-SSMabstracts.112>

(96) Bhagtani, Divya; Augustus, Eden; Haynes, Emily; St Ville, Arlette; Iese, Viliamu; Fesaitu, Jioje; Badrie, Neela; Kroll, Florian; Foley, Louise; **Hambleton, Ian**; P22 Prevalence of food insecurity and its associations with socio-demographic factors, food sources and dietary diversity, in small island developing states 2021 BMJ Publishing Group Ltd

(95) Augustus, Eden; Bhagtani, Divya; Haynes, Emily; St Ville, Arlette; Iese, Viliamu; Fesaitu, Jioje; Kroll, Florian; **Hambleton, Ian**; Benjamin-Neelon, Sara; Unwin, Nigel; P23 Using latent class analysis to explore dietary patterns and

their associations between sociodemographic characteristics, food sources, dietary diversity, and food insecurity in small island developing states 2021 BMJ Publishing Group Ltd

2020

(94) **IR Hambleton, MM Murphy**. Presentation of surveillance and risk management process planning to the CARICOM Heads of Government. Regional prime-ministers in attendance. 15-April-2020. Bridgetown, Barbados.

(93) Haynes, Emily; Bhagtani, Divya; Guell, Cornelia; **Hambleton, IR**; Iese, Viliamu; Fesaitu, Jioje; Benjamin-Neelon, SE; Forouhi, NG; Unwin, N; OP58 An investigation into the associations between socio-demographic factors, food sources and dietary quality in small island developing states 2020 BMJ Publishing Group Ltd

(92) **IR Hambleton**, K Quimby. Presentation of modelling and surveillance work to CARICOM regional COHSOD meeting. COHSOD is the CARICOM Council for Human and Social Development. Regional ministers of health in attendance. 6-April-2020. Bridgetown, Barbados.

(91) **IR Hambleton**, K Quimby. Third presentation (with regional situation update) of Barbados model to the Caribbean Disaster Emergency management Agency (CDEMA). CARPHA and PAHO in attendance. Addition of surveillance products in development. 2-April-2020. Bridgetown, Barbados.

(90) **IR Hambleton**. Second presentation (with regional situation update) of Barbados model to the Caribbean Disaster Emergency management Agency (CDEMA). CARPHA and PAHO in attendance. Addition of surveillance products in development. 30-March-2020. Bridgetown, Barbados.

(89) **IR Hambleton**. Presentation of Barbados model to the Caribbean Disaster Emergency Management Agency (CDEMA). CARPHA and PAHO in attendance. 26-March-2020. Bridgetown, Barbados.

(88) **IR Hambleton**, MM Murphy. Presentation of model results and intervention recommendations to the Barbados Ministry of Health and Wellness Emergency Operations Centre Team. 23-March-2020. Bridgetown, Barbados.

(87) **IR Hambleton**, N Sobers. Using SEIR models to predict healthcare demand due to COVID-19 in Barbados. Presented to Barbados Prime Minister. 18-March-2020. Bridgetown, Barbados.

2019

(86) Quimby, Kim; George, Colette; **Hambleton, Ian**; Olivier, Patrick; Unwin, Nigel; 3461 A community-based, low calorie dietary intervention for the prevention and remission of type 2 diabetes mellitus Journal of Clinical and Translational Science 3 s1 137-137 2019 Cambridge University Press

(85) AR Greenidge, AP Speede, KR Quimby, **IR Hambleton**, RC Landis. Albumin creatinine ratio is associated with foot ulceration in people with diabetes: a case-control study in Barbados. 64th Annual CARPHA Health Research Conference. Hilton Trinidad and Conference Centre, Trinidad and Tobago June 20–22, 2019

(84) NP Sobers, S Forde, SM Jeyaseelan, **I Hambleton**. Evaluating dissemination activities designed to bridge the gap between research and practice. 64th Annual CARPHA Health Research Conference. Hilton Trinidad and Conference Centre, Trinidad and Tobago June 20–22, 2019

(83) KR Quimby, T Jordan, C George, N Sobers, **I Hambleton**. Assessing the readiness and suitability of faith-based organisations as sites for the Barbados Diabetes Remission Study 2 - A community-based diabetes remission intervention. 64th Annual CARPHA Health Research Conference. Hilton Trinidad and Conference Centre, Trinidad and Tobago June 20–22, 2019

2018

(82) C Howitt, **IR Hambleton**, N Unwin. The contribution of physical inactivity to cardiovascular disease, type 2 diabetes, and all-cause mortality in the Caribbean. 7th ISPAH Conference, London, 15-17 October 2018.

(81) M Alvarado, J Adams, M Suhrcke, **I Hambleton**, TA Samuels, N Unwin. Assessing the impact of the Barbados sugar sweetened beverage tax on grocery store beverage sales: An interrupted time series analysis. 63rd Annual CARPHA Health Research Conference. St Kitts Marriott Resort & The Royal Beach Casino. St Kitts and Nevis. June 14–16, 2018

(80) L Guariguata, C Guell, TA Samuels, EAJA Rouwette, J Woodcock, **IR Hambleton**, N Unwin. Developing a systems model to inform policies for diabetes prevention in the Caribbean: A co-design approach to engage stakeholders in policy development and evaluation. 63rd Annual CARPHA Health Research Conference. St Kitts Marriott Resort & The Royal Beach Casino. St Kitts and Nevis. June 14–16, 2018

(79) L Guariguata, C Brown, NP Sobers, **IR Hambleton**, TA Samuels, N Unwin. Diabetes and related risk factors disproportionately affect Caribbean women: An updated systematic review and meta-analysis of diabetes and determinants. 63rd Annual CARPHA Health Research Conference. St Kitts Marriott Resort & The Royal Beach Casino. St Kitts and Nevis. June 14–16, 2018

(78) Alvarado, MA; Unwin, N; Sharp, S; **Hambleton, I**; Murphy, MM; Samuels, TA; Suhrcke, M; Adams, J; OP4 Assessing the impact of the barbados sugar sweetened beverage tax on grocery store beverage sales and national imports: an interrupted time series analysis 2018 BMJ Publishing Group Ltd

(77) King, Amanda; Altenor, Cleopatra; Brown, Catherine; **Hambleton, Ian**; LL-01 Social determinants of treatment adherence and disease severity among people living with lupus in a small island developing state: a report from St. Lucia 2018 Archives of Disease in childhood

(76) NP Sobers, **I Hambleton**, JA Critchley, TA Samuels, N Unwin. Disparities in trends in pre-mature adult mortality from coronary heart disease and stroke in ten countries of the Caribbean Community 1991 to 2012. 63rd Annual CARPHA Health Research Conference. St Kitts Marriott Resort & The Royal Beach Casino. St Kitts and Nevis. June 14–16, 2018

2017

(75) Guariguata, L; Guell, C; Samuels, TA; Rouwette, EAJA; Woodcock, J; **Hambleton, IR**; Unwin, N; OP73 Systems science for caribbean health: the development of a system dynamics model for guiding policy on diabetes in a resource limited setting 2017 BMJ Publishing Group Ltd

(74) Sobers-Grannum N, Rose AMC, Samuels TA, Critchley J, **Hambleton IR**, Harvey A, Unwin N. Gender disparities in the treatment of STEMI patients in the Caribbean country of Barbados. American Public Health Association, Annual Meeting and Expo, Atlanta Nov 4-8 2017.

(73) Guariguata L, Guell C, Samuels TA, Rouwette E, Woodcock J, **Hambleton I**, Unwin N. Systems Science for Caribbean Health: The development of a system dynamics model for guiding policy on diabetes in the Caribbean. American Public Health Association, Annual Meeting and Expo, Atlanta Nov 4-8 2017.

(72) Guariguata L, Guell C, Samuels TA, Rouwette E, Woodcock J, **Hambleton I**, Unwin N. Systems Science for Caribbean Health: The development of a system dynamics model for guiding policy on diabetes in a resource limited setting. Society for Social Medicine, Annual Scientific Meeting, Sep 4, 2017.

(71) C Taylor, G Taylor, A Atherley, **I Hambleton**, N Unwin, P Adams. The Barbados Insulin Matters (BIM) study: Barriers to insulin therapy among a population-based sample of people with type 2 diabetes in the Caribbean island of Barbados. 62nd CARPHA Health Research Conference, Guyana, April 27-29, 2017.

(70) RM Harris, AMC Rose, **IR Hambleton**, C Howitt, NG Forouhi, AJM Hennis, TA Samuels, N Unwin. Sodium and potassium excretion in an adult Caribbean population of African descent with a high burden of cardiovascular disease. 62nd CARPHA Health Research Conference, Guyana, April 27-29, 2017.

(69) M Alvarado, M Suhrcke, **I Hambleton**, T Hassell, D Kostova, TA Samuels, N Unwin. The Barbados tax on sugar sweetened beverages: an overview of the evaluation in progress and an initial assessment of the effect on retail prices. 62nd CARPHA Health Research Conference, Guyana, April 27-29, 2017.

(68) L Guariguata, C Guell, TA Samuels, EAJA Rouwette, J Woodcock, **IR Hambleton**, N Unwin. Systems Science for Caribbean Health: The development of a model for guiding policy on diabetes in the Caribbean. 62nd CARPHA Health Research Conference, Guyana, April 27-29, 2017.

(67) N Unwin, C Howitt, **IR Hambleton**, TA Samuels, A Hennis, AMC Rose. Prevalence and phenotype of diabetes and prediabetes using fasting glucose versus HbA1c in a Caribbean population: implications for policy on diagnosis and prevention. 62nd CARPHA Health Research Conference, Guyana, April 27-29, 2017.

(66) AMC Rose, N Unwin, C Howitt, TA Samuels, EA Phillips, KS George, AJM Hennis, **IR Hambleton**. Economic burden of cardiovascular disease in a small island developing state. 62nd CARPHA Health Research Conference, Guyana, April 27-29, 2017.

(65) AMC Rose, N Unwin, C Howitt, EA Phillips, TA Samuels, **IR Hambleton**. Quality of life after cardiovascular disease in a small island developing state. 62nd CARPHA Health Research Conference, Guyana, April 27-29, 2017.

(64) A Razavi, **I Hambleton**, T A Samuels, N Sobers-Grannum, N Unwin. Changes in health care expenditure as a predictor of trends in cardiovascular disease and diabetes mortality in the Caribbean countries between 2000 and 2010. 62nd CARPHA Health Research Conference, Guyana, April 27-29, 2017.

(63) AR Greenidge, AP Browne, **IR Hambleton**, RC Landis. Erectile Dysfunction and Depression in a Barbadian male Population. 62nd CARPHA Health Research Conference, Guyana, April 27-29, 2017.

2016

(62) CR Brown, SM Hercules, N Sobers-Grannum, MM Murphy, N Unwin, C Howitt, M Alvarado, **IR Hambleton**. Social determinants of prostate cancer in the Caribbean: A systematic review and metaanalysis. 61st CARPHA Health Research Conference, Turks and Caicos, June 23-25, 2016

(61) Allen C, **Hambleton I**, LeFranc, E. Parenting Practices and Intimate Partner Violence in the Next Generation: a Survey of Risk Factors for Violence among Youth in Barbados, Jamaica and Trinidad and Tobago. SALISES 16th Conference, Hilton, Bridgetown, 3-Mar-2016

2015

(60) Allen, CF; Halsall, C; **Hambleton, IR**; Delaney, A; Gittens, C; Gittens, M; Landis, R; HIV Gateway: expanding access to Caribbean HIV research via a website Caribbean Public Health Agency: 60th Annual Scientific Meeting [1-75] 2015

(59) Allen, Caroline F; **Hambleton, Ian R**; Quimby, Kim; Le Franc, Elsie; Are women the main victims of violence within relationships? Prevalence, type and frequency of intimate partner violence and aggression by sex in Barbados, Jamaica and Trinidad and Tobago Caribbean Public Health Agency: 60th Annual Scientific Meeting [1-75] 2015

(58) **IR Hambleton**. Creating health inequality profiles. UNICEF / ESCAP Workshop. Kathmandu, Nepal, October 27-28th, 2015.

(57) **IR Hambleton**. Creating health inequality profiles. UNICEF / ESCAP Workshop. Bangkok, Thailand, June 26-30th, 2015.

(56) Taylor Jr., C.G., Bynoe, K.A., Worme, A., Whittington, A., **Hambleton, I.**, Atherley, A., Husbands, A., Unwin, N. (2015) 'The effect of a checklist on the education of simulated patients during insulin initiation: a randomized controlled trial' Diabetes. Vol. 64 (Supplement 1). A187-A235. June 2015.

(55) C Howitt, **IR Hambleton**, AMC Rose, AJM Hennis, KS George, N Unwin. The social determinants of diabetes and cardiovascular disease risk factors in Barbados: findings from the Health of the Nation study. 60th CARPHA Health Research Conference, Grenada, June 25-27, 2015.

(54) C F Allen, **IR Hambleton**, K Quimby, E Le Franc. Are women the main victims of violence within relationships? Prevalence, type and frequency of intimate partner violence and aggression by sex in Barbados, Jamaica and Trinidad and Tobago. 60th CARPHA Health Research Conference, Grenada, June 25-27, 2015.

(53) AMC Rose, LS Craig, TN Martelly, L Maul, DOC Corbin, KS George T, Blackman, TA Hassell, AJM Hennis, **IR Hambleton**. Incidence of and mortality from stroke in Barbados, 2009–2011. 60th CARPHA Health Research Conference, Grenada, June 25-27, 2015.

(52) C F Allen, C Halsall, **IR Hambleton**, A Delaney, C Gittens, M Gittens, RC Landis. HIV Gateway: expanding access to Caribbean HIV research via a website. 60th CARPHA Health Research Conference, Grenada, June 25-27, 2015.

(51) AR Greenidge, AP Browne, **IR Hambleton**, RC Landis. Albumin/Creatinine Ratio As An Indicator of Diabetic Foot in a Barbados Population. 60th CARPHA Health Research Conference, Grenada, June 25-27, 2015.

(50) F Morey, **IR Hambleton**, NC Unwin, TA Samuels. Ethnic and gender disparities in premature adult mortality in Belize 2008-2010. 60th CARPHA Health Research Conference, Grenada, June 25-27, 2015.

(49) LS Craig, Rose A, **Hambleton I**. Cancer In Barbados: First Year of data from the National Cancer Registry In Barbados. 60th CARPHA Health Research Conference, Grenada, June 25-27, 2015.

2013

(48) Atherley AE, Lashley PM, George C, Morris C, **Hambleton I**, Taylor CG. Final year clerkships, does one size fit all? - Preliminary findings. 2013

(47) Atherley AE, Lashley PM, George C, Morris C, **Hambleton I**, Taylor CG. Understanding anxiety during transition into a final year medicine clerkship- Preliminary results. 2013

(46) CG Taylor Jr., M Krimholtz, K Belgrave, **I Hambleton**, C George, G Rayman. Burden of diabetes and diabetic foot disease to acute hospital admissions in Barbados. Diabetes UK Professional Conference, Manchester. 13-15 March 2013.

(45) **Hambleton I**. Disparities in mortality and life expectancy in the Caribbean. National Institutes of Health, National Institute on Minority Health and Health Disparities, Sullivan Alliance HQ, Alexandria, VA, USA. February 21 2013.

(44) AS Harewood-Marshall, T Blackman, DOC Corbin, T Martelly, KS George, AJM Hennis, **IR Hambleton**, AMC Rose. Is the standard of acute stroke care in Barbados in keeping with evidence-based recommendations? An investigation of 2009 national registry data. 58th Annual CARPHA (CHRC) Scientific Meeting. Hilton Barbados Resort – Barbados. May 02-04, 2013

(43) KR Quimby, **IR Hambleton**, RC Landis. Reduced haptoglobin bioavailability inhibits the expression of a cytoprotective monocyte population in sickle cell disease. 58th Annual CARPHA (CHRC) Scientific Meeting. Hilton Barbados Resort – Barbados. May 02-04, 2013

(42) F Morey, **IR Hambleton**, TA Samuels. All-cause and Cervical Cancer mortality by ethnicity in Belize: 2008-2010. 58th Annual CARPHA (CHRC) Scientific Meeting. Hilton Barbados Resort – Barbados. May 02-04, 2013

(41) RC Landis, S Branch Beckles, S Crichlow, **IR Hambleton**, A Best. 10 year National HIV Viral Load trends in Barbados: Implication for treatment as prevention. 58th Annual CARPHA (CHRC) Scientific Meeting. Hilton Barbados Resort – Barbados. May 02-04, 2013

(40) C Taylor, M Krimholtz, K Belgrave, **I Hambleton**. Inpatient diabetes care at the Queen Elizabeth Hospital in Barbados. 58th Annual CARPHA (CHRC) Scientific Meeting. Hilton Barbados Resort – Barbados. May 02-04, 2013

(39) KR Quimby, S Moe, I Sealy, C Nicholls, **IR Hambleton**, RC Landis. Clinical findings associated with Homozygous Sickle cell disease in the Barbadian Population – Do we need a national SCD registry? 58th Annual CARPHA (CHRC) Scientific Meeting. Hilton Barbados Resort – Barbados. May 02-04, 2013

2012

(38) Diette, Gregory B; Jeyaseelan, Selvi; **Hambleton, Ian**; Ojeh, Nkemcho; Archer, Noel; Browne, Amy; Sobers-Grannum, Natasha; Giddings, Pam; Colthurst, James; Tolerability Of Fenzian Electrobiofeedback Treatment For Asthma In A Caribbean Population B37. NEW INSIGHTS INTO ASTHMA AND COPD TREATMENT A2864-A2864 2012 American Thoracic Society

2011

(37) Jeyaseelan S, Humphreys S, Gaskin P, Grace J, **Hambleton I**. Providing low-cost fruit and vegetables to people with type-2 diabetes in Barbados: a feasibility study on dietary barriers to success. IDF World Diabetes Congress, 4-8 December, 2011. Dubai.

(36) Quimby KR, Flower C, **Hambleton IR**, Landis C, Hennis A. Novel Inflammatory Factors and Disease Activity in SLE. Presented at the British Society for Immunology Summer School, LLantwit Major, South Wales, 5th – 8th July 2011

(35) Davis M, Williams D, Jeyaseelan S, **Hambleton I**, Jennings A, Price L, Breysse P, Diette G, McCormack M. Association between Staphylococcus aureus in the home environment and lung function in asthmatic children during a pilot study in Barbados. International Society for Environmental Epidemiology, Sep 2011.

2010

(34) Perks C, Drakes N, **Hambleton IR**, Kumar A, Quimby K, Patel R, Clarke C, Landis RC Transactional and Inter-Generational Sex with older men (TIGSex Survey): A survey in Barbadian girls aged 15-19, ASPHER's Young Researchers' Forum, 3rd European Public Health Conference, Amsterdam, Nov. 10th 2010.

(33) Perks C, Drakes N, **Hambleton IR**, Kumar A, Quimby K, Patel R, Clarke C, Landis RC. Transactional and Inter-Generational Sex with older men (TIGSex Survey): A survey in Barbadian girls aged 15-19. 19th Congress of the EADV - Gothenburg, Sweden, 6-10 October 2010

(32) Perks C, Drakes N, **Hambleton IR**, Kumar A, Quimby K, Patel R, Clarke C, Landis RC. The TIGSex Survey: A survey in Barbadian girls aged 15-19, Interim Analysis, The 25th IUSTI Europe Conference on STIs and HIV/AIDS, Tbilisi, Georgia, September 23rd-25th, 2010

(31) Belgrave NRS, **Hambleton IR**, Hennis AJM, Rose AMC. Investigation of the number of acute cardiac events admitted to the Queen Elizabeth Hospital, Barbados, 2003-2007. West Indies Med J (Suppl) 2010; 59(S2):16.

(30) Drakes N, Perks C, **Hambleton IR**, Kumar A, Quimby K, Patel R, Clarke C, Landis RC. Transactional and Inter-Generational Sex with Older Men (TIGSex Survey): A Survey among Barbadian Girls aged 15-19. Oral presentation at the 7th CCAS HIV/AIDS workshop held at Accra, 22nd – 27th August 2010

(29) Granado MN, **Hambleton IR**, Hennis AJM, Rose AMC. Identifying breast cancer screening barriers among Barbadian women. West Indies Med J (Suppl) 2010; 59(S2):23.

2009

(28) Rose A, **Hambleton I**, Jeyaseelan S, Hennis A. Surveillance of chronic non-communicable diseases in Barbados: developing a future Caribbean model. Circulation. 2009 Mar 16;119(10):e350.

(27) Sobers-Grannum N, Pathak EB, **Hambleton IR**, Sloan MA, Rose AM, Hennis AJ. Awareness of drug treatment in an elderly hypertensive population: Findings from the Study of health, aging and well-being in Barbados, West Indies. Circulation. 2009 Mar 16;119(10):e345.

(26) Pathak EB, Sobers-Grannum N, [Hambleton IR](#), Rose AM, Hennis AJ. Social Class and prevalence of cardiovascular risk factors among urban elders: Study of Health, aging and well-being in Barbados, West Indies. *Circulation*. 2009 Mar 16;119(10):e344.

2008

(25) LeFranc E, [Hambleton I](#), Atkinson U. Parenting practices, family structures and family exclusion among adolescents in Jamaica. Caribbean Child Research Conference; Oct 21-22, 2008 Kingston, Jamaica.

(24) Watson-Jones D, Weiss HA, Rusizoka M, Chagalucha J, Baisley K, Mugeye K, Tanton C, Ross D, Everett D, Clayton T, Balira R, Knight L, [Hambleton I](#), Le Goff J, Belec L, Hayes R. Risk factors associated with HIV incidence in HSV-2 seropositive Tanzanian women in a RCT of HSV-2 suppressive therapy. Program and abstracts of the AIDS 2008: XVII International AIDS Conference; August 3-8, 2008; Mexico City, Mexico.

(23) Heuschmann P, Smeeton N, Hennis A, Corbin D, [Hambleton I](#), Wolfe C. Differences in prevalence and management of prior-to stroke risk factors between Black Caribbeans in the UK and in Barbados. XVII European Stroke Conference, Nice, France. 13-16 May 2008.

(22) Le Franc E, [Hambleton I](#), Atkinson U. Parenting Practices, Family Structures and Social Exclusion among Adolescents in Jamaica. Caribbean Child Research Conference. October 21-22. 2008

(21) Rose AMC, Hennis AJ, [Hambleton IR](#). Sex and the city: disease, disability and active community engagement in male and female elderly of 7 cities. Community-Based Prevention and Management of Cardiovascular and Other Chronic Diseases among Caribbean Elderly, Antigua, 13-15 October 2008

2007

(20) Allen C, Lees S, Desmond N, Der G, Chiduo B, [Hambleton I](#), Vallely A, Hayes R, Ross D. Validity of coital diaries in the Microbicides Development Programme feasibility study among women at high risk of HIV in Mwanza, Tanzania. HIV Microbicides Conference, Durban, South Africa, 2007

2006

(19) Fraser R, [Hambleton I](#), Serjeant G, Reid M. The length of a painful crisis in sickle cell disease. Caribbean Health Research Council Annual Conference. St.Kitts, 2006.

2005

(18) Younger N, [Hambleton IR](#), Clarke K, Powell C. Experience of Using Stata Software in Teaching an Introductory Biostatistics Course for MSc Nutrition Students from 2002-2004. Joint Statistical Meeting, Minneapolis, US, 2005.

(17) Moosang M, Forrester TE, [Hambleton IR](#), McKenzie CA, Reid M. Risk of stroke in sickle cell disease: the Sickle Cell Unit experience 1992- 2002. Caribbean Health Research Council Annual Conference. Tobago, 2005.

(16) Rambaran C, Forrester TE, Chowienczyk PJ, Iveson E, [Hambleton IR](#), Ritter JM, Shah AM, Wilks RJ, Kalra L. Nature and nurture as determinants of predisposition to cardiovascular disease in people of African descent. Caribbean Health Research Council Annual Conference. Tobago, 2005.

(15) Rambaran C, Forrester TE, Chowienczyk PJ, Iveson E, [Hambleton IR](#), Ritter JM, Shah AM, Kalra L. Early atherosclerosis affects the function of small rather than large arteries in Afro-Caribbean subjects. Caribbean Health Research Council Annual Conference. Tobago, 2005.

(14) Creary LE, McKenzie CA, Hanchard NA, Taylor V, [Hambleton IR](#), Forrester TE, Thein SL. Ethnic difference in fetal haemoglobin and F cells levels in adults: data from Afro-Caribbean, European and Afro-German. Caribbean Health Research Council Annual Conference. Tobago, 2005.

(13) NA Hanchard, [Hambleton IR](#), McKenzie CA. The frequency of the sickle allele in Jamaica: analysis of data from two neonatal screening cohorts. Caribbean Health Research Council Annual Conference. Tobago, 2005.

2004

(12) Steel-Duncan J, Pierre R, Evans-Gilbert T, Rodriguez B, Smikle M, Palmer P, Whorms S, [Hambleton I](#), Figueroa P, Christie C. Uptake of interventions, outcomes and challenges in Caring For HIV-exposed infants in a resource poor setting. 15th International HIV/AIDS Conference, Bangkok, Thailand, July 2004, Abstract B10584.

(11) Pierre R, Steel-Duncan J, Evans-Gilbert T, Rodriguez B, Palmer P, Smikle M, Whorms S, [Hambleton I](#), Figueroa P, Christie C. CDC Defined Diseases and opportunistic infections among Jamaican Children with HIV/AIDS. 15th International HIV/AIDS Conference, Bangkok, Thailand, July 2004; Abstract MoPeC3373.

(10) Evans-Gilbert T, Pierre R, Steel-Duncan J, Rodriguez B, Whorms S, [Hambleton I](#), Figueroa P, Christie C. Scaling-up antiretroviral therapy in Jamaica. Emerging Infectious Diseases Conference, Toulon, France; July, 2004.

(09) [Hambleton IR](#), Linsell L, Clarke KM, Knight-Madden J, Wierenga KJJ. External validation of prognostic disease models: Health status in homozygous sickle cell. Caribbean Health Research Council Annual Conference. Grenada, 2004

(08) [Hambleton IR](#), Linsell L, Younger NO, Wierenga KJJ. Health status in homozygous sickle-cell disease: a systematic review of prognostic studies. Caribbean Health Research Council Annual Conference. Grenada, 2004.

(07) [Hambleton IR](#), Younger NO, Clarke KM, Wierenga KJJ. Measuring non-response in prospective cohort studies: the Jamaican Study of Sickle-Cell Disease. Caribbean Health Research Council Annual Conference. Grenada, 2004.

(06) Carter AC, Hennis A, Broome H, [Hambleton IR](#), Fraser HF. Obesity in the elderly in Barbados. Caribbean Health Research Council Annual Conference. Grenada, 2004.

(05) Hennis A, Clarke K, [Hambleton IR](#), Broome H, Brathwaite F, Fraser HF. Health status in older Barbadians. Caribbean Health Research Council Annual Conference. Grenada, 2004.

2001

(04) Wierenga KJ, [Hambleton IR](#), Lewis NA. Survival estimates for patients with homozygous sickle-cell disease in Jamaica: a clinic-based population study. Annual Meeting of the National Sickle Cell Disease Program. Philadelphia. April 2001.

2000

(03) Wierenga KJJ, [Hambleton IR](#), Grandison TM, Char G. Mortality and circumstances of death in Jamaican patients with homozygous sickle cell disease. Annual Meeting of the National Sickle Cell Disease Program. San Francisco. April 2000.

1998

(02) Ricketts A, Parker SP, Brouwer J, [Hambleton IR](#), Singhal A, Serjeant GR. Vitamin A, E, and carotenoid status in Jamaican children with sickle cell disease. Commonwealth Caribbean Medical Research Council Annual Conference. Jamaica, April 1998.

(01) Knight J, **Hambleton I**, Hemmings-Kelly M, Homi J. Spirometric abnormalities in Jamaican children with SS and SC disease. Commonwealth Caribbean Medical Research Council Annual Conference. Jamaica, April 1998

E. Other Outputs: Data Handling Infrastructure

I develop and manage all aspects of data management and statistics at the George Alleyne Chronic Disease Research Centre (GA-CDRC). I maintain active collaborations with colleagues at the University of the West Indies and beyond, and these links offer a rich source of publication development.

Since September 2020, I have been leading the development of GDPR compliant facilities for handling research data at the University of the West Indies, Cave Hill Campus (see description below).

Research Data Handling Infrastructure

Best practice research data handling (RDH) is becoming more important for research success. It is now a pre-requisite for many international grant applications, and research funders regularly require the subsequent sharing of data resources generated from their research funds. Data legislation to protect personal data continues to improve internationally, adding further complexity for researchers working with human participants. While the data processing demands placed on researchers continues to grow, the training and facilities available to Caribbean researchers have not kept pace with these increasingly technical demands.

The development of guidelines and training for best-practice data handling, along with online tools to facilitate data collection and data sharing are key components in university RDH infrastructures elsewhere. Well constructed, this infrastructure could identify synergies between researchers, catalyse cross-faculty collaborations, and (eventually) enhance research quality and output. I am leading a project at The University of the West Indies, Cave Hill campus, to develop an RDH infrastructure with the following broad components • RDH governance • Education Services • RDH Infrastructure.

Education services would include formal training in aspects of data handling and analytics as well and longer-term mentoring, self-paced learning materials, and best-practice guidelines. An RDH Infrastructure would include software to facilitate the creation of Data Management Plans, for online secure data collection, and for online secure data sharing.

Development of Research Infrastructure

2020-	Planning of GDPR and HIPAA compliant data handling services for The University of the West Indies, Cave Hill Campus (see description above).
2017-	Planning of GA-CDRC "electronic Research Data Infrastructure" (eRDI) <i>Internal CDRC ITC platform and content management backbone for the collection, storage and dissemination of research data</i>
2016-2017	Planning of GA-CDRC Data Group <i>Creating an informal research grouping around researchers with an interest in the broad field of Data Science</i>
2013-2015	Planning of Virtual Health Research Unit <i>ITC platform and content management system for the storage and dissemination of HIV-related health information and datasets.</i>
2014	Database implementation (RedCap). <i>RedCap deployment at the GA-CDRC. Web-based software for Electronic Data Capture (SDC). Open-source, web-based clinical research software platform.</i>
2009	Database implementation (OpenClinica). <i>OpenClinica deployment at the CDRC. Web-based software for Electronic Data Capture (SDC). Open-source, web-based clinical trial software platform with full regulatory compliance.</i>

- 2009 Document repository implementation (KnowledgeTree)
KnowledgeTree implementation for centralized storage and version control of all study documentation.
- 2008 Implementation of Good Clinical Practice at the Chronic Disease Research Centre.
Review of current processes. Upgrade to RCT compliant procedures. Development of Standard operating Procedures (SOPs).

Study Management

- 2018-current Improving Household Nutrition Security and Public Health in the CARICOM (FaN). *Data management and data analytics.*
- 2017-2021 Planning for a Sustainable and Robust Regional Center for Research Excellence (RCRE) in the Caribbean. *Data management and data analytics.*
- 2017-2020 Developing theory and methods for evaluating the impact of community food initiatives on NCD risk, social and economic wellbeing and the environment. *Data management and data analytics.*
- 2009-current The Barbados National Registry (Phases II, III, IV). Translation of data for public health policy. *Preparation of protocol / operations manual. Database design. Data management and statistical analyses.*
- 2012-2015 US-Caribbean Health Disparities Research Consortium (USCAHDR).
Preparation of THREE protocols / operations manuals. Management of project "analysis programme" for the discovery and secondary analysis of available Caribbean health datasets (see CDRC Technical Reports for output details).
- 2011-2014 The Health of the Nation.
Preparation of protocol / operations manual. Database design. Data management and statistical analyses.
- 2009-2012 The Barbados National Lupus Register.
Preparation of protocol / operations manual. Database design. Data management and statistical analyses.
- 2009-current The Barbados National Register – Cancer.
Preparation of protocol / operations manual. Data management and statistical analyses.
- 2009- current The Barbados National Register – Heart
Preparation of protocol / operations manual. Data management and statistical analyses.
- 2009-2011 Wound Healing in Diabetes (WHY study).
Preparation of protocol / operations manual. Database design. Data management and statistical analyses.
- 2008- current The Barbados National Register – Stroke.
Preparation of protocol / operations manual. Data management and statistical analyses.
- 2007-2009 Nutritional supplementation to maintain weight in people with HIV/AIDS, Kingston, Jamaica.
Data management and statistical advisor.

F. Honoric Awards for Scholarship

- 2017 Vice-Chancellor's Award for Excellence in Research. Trinidad and Tobago, October 2017.
- 2011 The University of the West Indies, Mona. Research awards. Best article: Simms-Stewart D, Thame M, Heman-Keens A, **Hambleton IR**, Serjeant GR. Retained placenta – a complication of pregnancy in homozygous sickle cell disease. *Obstet Gynecol.* 2009 Oct;114(4):825-8.
- 2008 The University of the West Indies. Awardee "60-under-60" researcher awards.
- 2007 The University of the West Indies, Mona. Research awards. Best article: Thompson J, Reid M, **Hambleton I**, Serjeant GR. Albuminuria and renal function in homozygous sickle cell disease: observations from a cohort study. *Arch Intern Med.* 2007 Apr 9;167:701-8.
- 2004 Royal Statistical Society. Chartered Statistician (CStat).
- 2002 The University of the West Indies, Mona. Research awards. Best article: Mohan JS, Vigilance JE, Marshall JM, **Hambleton IR**, Reid HL, Serjeant GR. Abnormal venous function in patients with homozygous sickle cell (SS) disease and chronic leg ulcers. *Clin Sci (Lond).* 2000 Jun;98(6):667-72.
- 1999-2003 Post-graduate research fellowship. Medical Research Council (UK).
- 1998-present Fellow of the International Biometrics Society
- 1998-present Fellow of the Royal Statistical Society.
- 1992 Brunel University. Award for best undergraduate degree.

G. Invitations to Present at Academic Meetings

My recent invitational presentations have been related to the COVID-19 pandemic. See CV section (D) for broad details.

- 2017 Afro-Caribbean Cancer Consortium (AC3). Using REDCap for health research. Intercontinental Hotel, Doral, Miami, FL. Oct 6-9 2017.
- 2016 National Institutes of Health, National Institute on Minority Health and Health Disparities. "Health inequalities in the Caribbean and in the North America." Sullivan Alliance HQ, Alexandria, VA, USA. May 2016.
- 2015 National Institutes of Health Training Workshop (Presenter), Improving Chronic Disease in the Caribbean through Evidence-Based Behavioral and Social Interventions, July 21-23, 2015, Bridgetown, Barbados
- 2015 National Institutes of Health, National Institute on Minority Health and Health Disparities. "Health inequalities in the Caribbean and in the North America." Sullivan Alliance HQ, Alexandria, VA, USA. February 2015.
- 2014 National Institutes of Health, National Institute on Minority Health and Health Disparities. "Comparison of health disparities between African-descent populations in the Caribbean and North America." Sullivan Alliance HQ, Alexandria, VA, USA. February 18 2014.
- 2013 National Institutes of Health, National Institute on Minority Health and Health Disparities. "Disparities in mortality and life expectancy in the Caribbean." Sullivan Alliance HQ, Alexandria, VA, USA. February 21 2013.
- 2011 European Union. Presentation at EUBIROD. "Developing diabetes registration in the Caribbean". January 28-29 2011, Brussels, Belgium.
- 2009 Pan American Health Organization. "Cancer registration in the English-speaking Caribbean". Workshop on developing a model for sustainable cancer registration in Latin America and the Caribbean.
- 2008 Pan American Health Organization. Human Resources for Health (HRH). Workshop on developing a minimal dataset for HRH monitoring in the Caribbean.
- 2007 Government of Barbados, Ministry of Education. Expert Committee on environmental health concerns at the Louis Lynch comprehensive school, Bridgetown, Barbados.
- 2002 Government of Jamaica. Expert Committee on environmental impact of severe weather events on coffee yields.

H. Invitation to serve on National/Regional/International Public and Scholarly Bodies

I wear two editorial hats for the well-known Cochrane Collaboration, and am a statistical reviewer for a number of health journals. I have served on numerous committees as a data management and statistical advisor, on a range of issues of public health significance to the region. I serve on the UWI/MoH Research Ethics Committee.

The Cochrane Collaboration is an international not-for-profit and independent organization, dedicated to making up-to-date, accurate information about the effects of healthcare readily available worldwide. It produces and disseminates systematic reviews of healthcare interventions and promotes the search for evidence in the form of clinical trials and other studies of interventions.

- 2021 – present National Institutes for Health, National Heart Lung, and Blood Institute (NHLBI). Statistician on Data Safety Monitoring Board (DSMB) for HLB SIMPLe. Review of late-stage implementation research strategies for proven-effective prevention and treatment interventions in people living with HIV in low- and middle-income countries (LMICs) and Small Island Developing States (SIDS).
- 2020 – present Pan American Health Organization, PAHO. Member of Expert Committee. Digital Transformation and Data Science in the Americas
- 2020 – present CARICOM, Council for Human and Social Development (COHSOD). Member of Technical Advisory group for COVID-19 outbreak surveillance and modelling.
- 2018 – present National Institute for Health Research (NIHR). NIHR Fellowship Programme assessor.
- 2017 – present UK Medical Research Council. Programme Grant application reviewer.
- 2017 – present Chair, Data Sharing Working Group for The Yale University Transdisciplinary Collaborative Center for Health Disparities Research (Yale-TCC) / Eastern Caribbean Health Outcomes Research Network (ECHORN).
- 2017 – present Cohorts Collaboration of Latin America and the Caribbean (CC-LAC) / Imperial College, London, UK. Steering committee member.
- 2017 – present Pan-American Health Organization (PAHO). Technical advisory committee for the development of methods to analyze mortality in the presence of small numbers.
- 2015 – present United Nations Children’s Fund (UNICEF). Approved statistician for provision of statistical support to UNICEF research output.
- 2012 – 2019 International Diabetes Federation (IDF). Committee member for the Diabetes Atlas 6th / 7th / 8th edition, with special focus on developing statistical methodology for prevalence rate sensitivity analyses.
- 2011 – present Member of Committee for the analysis & production of the annual Barbados HIV/AIDS Surveillance Report. (HIV/AIDS Programme, Ministry of Health, Government of Barbados).
- 2010 – present Member of University of the West Indies / Ministry of Health Institutional Review Board (Ethics Board) for the review of research involving human subjects.
- 2009 - present Statistical Editor, Cochrane Collaboration. Appointed statistical editor with the Cochrane Collaboration (Cystic Fibrosis and Genetic Disorders Group). Full editorial duties for this global network for systematic reviews of randomised clinical trials. The Cochrane Library has an impact factor of 6.186 – 10th out of 153 “General Medicine” journals.
- 2008 - present Haemoglobinopathies Editor, Cochrane Collaboration. Appointed haemoglobinopathies editor with the Cochrane Collaboration (Cystic Fibrosis and Genetic Disorders Group). Full editorial duties for this global network for systematic reviews of randomised clinical trials.

2009 - present	Caribbean representative. World Health Organization (joint IARC/PAHO) taskforce on developing sustainable cancer registration in Latin America and the Caribbean.
Present	Statistical and subject-matter reviewer for a further seven (7) journals. The Lancet, British Medical Journal, Journal of Epidemiology and Community Health, Pan-American Journal of Public Health, Diabetes Care, Prevention and Control, West Indian Medical Journal. Reviewed over 40 manuscripts since arriving at the Chronic Disease Research Centre in 2006.
2008 - present	Member and statistical expert. The joint ethics committee (Institutional Review Board) of the University of the West Indies and the Barbados Ministry of Health.
2008 - present	Caribbean representative. Data management and statistical advisor. PAHO / WHO committee on development of Human Resources for Health (HRH) resources in the Caribbean.
2007 - 2010	Data management advisor to GWR Medical Inc. Phase III randomised controlled trial of topical oxygen for wound healing among people with diabetes and lower-limb ulceration.
2006 - 2008	Data management and statistical advisor to Institute of Child Health, London. A single blind, open label pilot randomised controlled trial of auto-adjusting positive airway pressure in children with sickle cell anemia.
2006	Barbados Government (Ministry of Education). Member of expert committee on health concerns at the Louis Lynch secondary school, Bridgetown. Performed epidemiological analysis of reported symptoms.
2005	Trial Steering Committee. Statistical advisor. Acyclovir for the prevention of HIV acquisition among HSV positive women. London School of Hygiene and Tropical Medicine.
2002	Jamaican Government (Jamaica Coffee Board). Member of expert committee. Performed audit and re-analysis of 2001 coffee yield losses due to severe weather events.
1998 - 2004	Honorary Lectureship. London School of Hygiene and tropical Medicine. Awarded for collaborative work on Sickle Cell Disease in developing countries.
2001 - 2004	Statistical advisor to the Kingston Paediatric HIV / AIDS Programme, The University of the West Indies, Mona campus.

I. Funding Attracted for Research and Study

With colleagues, I have secured grants with a total of more than 18 million US dollars in research funding (US \$14,883,855), with over **17 million US dollars** secured since arriving at the George Alleyne Chronic Disease Research Centre (GA-CDRC).

Many of these grants are international and collaborative in nature, with funds shared across multiple institutions. From the 17 million dollars secured since arriving at the GA-CDRC, I estimate that approximately **6.7 million US dollars** have been funds transferred to The University of the West Indies.

(25)	Grant title	RG-T4186 : CaribData: Caribbean Data-Driven Resilience. For details see: https://ianhambleton.com/caribdata/
	Value	Grant value: USD 521,000 (100% to UWI / Caribbean)
	Period	2023– 2026
	Role	Principal Investigator
	Funder	Inter-American Development Bank (IDB). Grant ID: - RG-T4186

(24)	Grant title	Pediatric ECHORN Cohort Study: intergenerational factors that contribute to cardiovascular risk in the Eastern Caribbean (Supplement)
	Value	Grant value: USD 34,045 (100% to UWI / Caribbean)
	Period	2022– 2023
	Role	Geospatial Infrastructure Development
	Funder	National Institutes of Health. Grant ID: -U54-MD010711-05S1
(23)	Grant title	Extending a Caribbean based cohort to promote US-Caribbean comparisons to facilitate research addressing black health disparities (5-year grant)
	Value	Year 1 grant value: USD 661,677 (Approx 15% to UWI / Caribbean) Year 2 grant value: USD 662,973 (Approx 15% to UWI / Caribbean) Year 3 grant value: USD 661,771 (Approx 15% to UWI / Caribbean) Year 4 grant value: USD 661,371 (Approx 15% to UWI / Caribbean)
	Period	2018 – 2023
	Role	Development of Data Collection Infrastructure
	Funder	National Institutes of Health. Grant ID: -5-R01-MD013347-04
(22)	Grant title	Pediatric ECHORN Cohort Study: intergenerational factors that contribute to cardiovascular risk in the Eastern Caribbean (5-year grant)
	Value	Year 1 grant value: USD 794,567 (Approx 15% to UWI / Caribbean) Year 2 grant value: USD 714,339 (Approx 15% to UWI / Caribbean) Year 3 grant value: USD 694,087 (Approx 15% to UWI / Caribbean) Year 4 grant value: USD 679,106 (Approx 15% to UWI / Caribbean)
	Period	2018 – 2023
	Role	Analytics Core
	Funder	National Institutes of Health. Grant ID: R01HL143785-01
(21)	Grant title	The Barbados Diabetes Remission Study (Phase 2 – scale-up)
	Value	USD 71,991 (all funds to UWI / Caribbean)
	Period	2018 – 2020
	Role	Analytics Core
	Funder	Massey Foundation (Barbados)
(20)	Grant title	Planning for a Sustainable and Robust Regional Center for Research Excellence (RCRE) in the Caribbean
	Value	USD 274,526 (Approx 25% to UWI / Caribbean)

	Period	2017 – 2019
	Role	Analytics Core
	Funder	National Institutes for Health / National Cancer Institute (P20 CA210294-01)
(19)	Grant title	Global Diet and Activity Research Group (GDAR).
	Value	GBP 1,999,804 (Approx 15% to UWI / Caribbean)
	Period	2017 – 2019
	Role	Co-Investigator / Data analyst
	Funder	UK National Institute for Health Research.
(18)	Grant title	Developing theory and methods for evaluating the impact of community food initiatives on NCD risk, social and economic wellbeing and the environment.
	Value	UKP 422,200 (Approx 25% to UWI / Caribbean)
	Period	2017 – 2019
	Role	Co-Investigator / Data analyst
	Funder	UK Medical Research Council (Ref: MR/P025250/1)
(17)	Grant title	The Barbados National Registry for Chronic non-communicable disease (BNR).
	Value	USD 1,000,000 (all funds to UWI / Caribbean)
	Period	2017 – 2021
	Role	Statistical advisory
	Funder	Barbados Ministry of Health
(16)	Grant title	Development and evaluation of system dynamics methods to engage with policy makers on the prevention and control of diabetes in a middle-income region
	Value	GBP 105,000 (all funds to UWI / Caribbean)
	Period	2016 - 2017
	Role	Co-investigator
	Funder	MRC-UK/Wellcome Trust/DfID Health Systems Research call
(15)	Grant title	US-Caribbean Consortium for Health Disparities Research (with Sullivan Alliance, Morehouse University)
	Value	US \$5,000,000 (Approx 40% to UWI / Caribbean)

	Period	2012 - 2016
	Role	Co-investigator
	Funder	National Institute on Minority Health and Health Disparities
(14)	Grant title	Virtual Health Research Unit
	Value	US \$350,000 (all funds to UWI / Caribbean)
	Period	2013 - 2015
	Role	Co-investigator
	Funder	The World Bank
(13)	Grant title	Infrastructure grant: software for spatial epidemiology
	Value	US \$35,000 (all funds to UWI / Caribbean)
	Period	2009
	Role	Principal Investigator
	Funder	Environmental Systems Research Institute (ESRI)
(12)	Grant title	Cochrane Collaboration award for Editorial staff
	Value	US \$15,000 (all funds to UWI / Caribbean)
	Period	2008 - 2009
	Role	Awardee
	Funder	The Cochrane Collaboration
(11)	Grant title	Infrastructure grant: spatial epidemiology of stroke, acute coronary events, and cancer
	Value	US \$85,000 (all funds to UWI / Caribbean)
	Period	2009 – 2011
	Role	Principal Investigator
	Funder	The European Union / Barbados Ministry of Health
(10)	Grant title	Cost of care for people with stroke or acute coronary events
	Value	US \$63,000 (all funds to UWI / Caribbean)
	Period	2009 - 2011
	Role	Co-Principal investigator
	Funder	The European Union / Barbados Ministry of Health

(09)	Grant title	Five-year survival among people with breast or prostate cancer in Barbados
	Value	US \$125,000 (all funds to UWI / Caribbean)
	Period	2009 - 2011
	Role	Co-Principal Investigator
	Funder	The European Union / Barbados Ministry of Health
(08)	Grant title	Research publicity grant: converting academic output into public health messages.
	Value	US \$15,000 (all funds to UWI / Caribbean)
	Period	2009 – 2010
	Role	Co-Investigator
	Funder	The Peter Moore’s Foundation
(07)	Grant title	The Barbados National Registry for chronic non-communicable disease (BNR)
	Value	US \$1 million (all funds to UWI / Caribbean)
	Period	2007 - 2011
	Role	Co-Principal Investigator
	Funder	The European Union / Barbados Ministry of Health
(06)	Grant title	Wound healing in Diabetes
	Value	US \$250,000 (all funds to UWI / Caribbean)
	Period	2008 – 2011
	Role	Co-investigator
	Funder	The Barbados Diabetes Foundation / Private industry
(05)	Grant title	The Barbados Lupus Registry
	Value	US \$75,000 (all funds to UWI / Caribbean)
	Period	2007 – 2009
	Role	Co-investigator
	Funder	Alliance for Lupus Research
(04)	Grant title	Positive airways pressure therapy in children with sickle cell anaemia: a phase 1 randomised clinical trial
	Value	US \$150,000 (approx. 10% to UWI / Caribbean)
	Period	2005-2008

	Role	Co-investigator
	Funder	The Stroke Association (UK)
(03)	Grant title	Determinants of inter-personal violence in three Caribbean nations: Barbados, Jamaica, Trinidad & Tobago
	Value	US \$750,000 (all funds to UWI / Caribbean)
	Period	2004 – 2008
	Role	Co-investigator
	Funder	The Wellcome Trust
(02)	Grant title	Cochrane travel award for developing countries
	Value	US \$5,000 (all funds to UWI / Caribbean)
	Period	2002
	Role	Awardee
	Funder	The Cochrane Collaboration
(01)	Grant title	Longitudinal analyses in sickle cell disease: The Jamaican Cohort Study
	Value	US \$240,000 (all funds to UWI / Caribbean)
	Period	1999 – 2003
	Role	Principal Investigator (Four-year MRC Research Fellowship)
	Funder	The UK Medical Research Council (MRC)

J. Graduate Students Supervised

I have co-supervised and provided statistical support a total of 37 postgraduate students, 29 pursuing programmes at the University of the West Indies.

Doctoral candidates (Supervision and Statistical Support)

2019-current	Stephanie Whiteman. FoodScapes. Neighbourhood influences on food supply and nutrition.
2019-current	Kern Rock. StreetScapes. Neighbourhood influences on walkability and physical activity
2015-2021	Leonor Guariguata. Development and evaluation of system dynamics modelling to support policy decision making for the prevention and control of diabetes
2011-2020	Rachel Harris. "The influence of socioeconomic status on sodium intake and dietary adequacy in Barbados"
2013-2018	Natasha Sobers-Grannum. Evidenced-based policy development: describing and explaining trends in cardiovascular disease in the Caribbean
2011-2018	Christina Howitt. "Physical activity and metabolic health in Barbados"
2009-2018	Songee Beckles. "The evolution of the HIV epidemic in Barbados"
2009-2019	Andre Greenidge. "A case-control study of factors associated with wound healing in diabetes: the WHY study"
2009-2017	Kim Quimby. "Clinical impact of the haemoglobin-scavenging mechanisms on haemolytic conditions"
2009-2017	Angela Rose. "The burden of stroke and acute myocardial infarction in Barbados"
2002-2006	Ceri Hirst (née Riddington). "Systematic reviews in homozygous sickle cell disease."
1997-2001	Junette Mohan. "Studies of venous function in homozygous sickle cell disease."

Graduate fellow (Fulbright scholarship)

2008	Misha Granada. "Identifying barriers to screening among Barbadian women."
------	---

Masters candidates (Medical Statistics / Development Statistics)

2015	Natalia Parris. "Are obesity definitions developed using Caucasian populations suitable predictors of cardiovascular risk in persons of African ancestry?"
2004	Raphael Fraser. "The length of a painful crisis in homozygous sickle cell disease."
2004	Hank Williams. "Determinants of violence and anti-social behaviour among Jamaican adolescents"
2004	Natalie James. "The effect of environment on the incidence of painful crisis in homozygous sickle cell disease"
2004	Tamika Royal. "The epidemiology of hyperglycaemic crises at the University Hospital of the West Indies."
2004	Ayesha Johnson. Cardiovascular risk factors in urban Jamaica."

- 1999 Vanessa Bond. "Fetal haemoglobin reference intervals in people with homozygous sickle cell disease"
- 1999 Nicola Gibbard. "Coping strategies among people with homozygous sickle cell disease"
- 1998 Anna Pictor. "Derived variable analysis in sickle cell disease research"
- 1998 Belinda Mak. "Hypersplenism in people with homozygous sickle cell disease"
- 1997 Nancy Barker. "Longitudinal description of haematological indices from the Jamaican Cohort Study of Sickle Cell Disease in adolescence."
- 1997 Helena Oakey. "Patterns of painful crisis presentations among people with homozygous sickle cell disease."
- 1997 Fiona Fordham. "Age-related haematological reference intervals among people with homozygous sickle cell disease"
- 1997 Merline Hemmings. "Haematological indices in people with sickle cell disease: multivariate relationships with clinical morbidity."

Masters candidates (other disciplines)

- 2003 Joan Thomas (MSc Sociology, UWI). "The educational attainment of adults with homozygous sickle cell disease"

Doctor of Medicine (DM) candidates

- 2008-2009 Dr Jo-Anne Brathwaite (DM Psychiatry). "The prevalence of geriatric depression in the district hospitals of Barbados."
- 2008-2009 Dr Joy Sue (DM Psychiatry). "Childhood mental disorders in Barbados: characteristics of patients seen at the child guidance clinic."
- 2008-2009 Dr Rashida Brown (DM Psychiatry). "The attitudes of medical practitioners towards patients with mental illness in Barbados."
- 2003-2004 Klaas Wierenga (DM Paediatrics). "The uptake of neonatal screening for sickle cell disease in Kingston, Jamaica."
- 2003-2004 Julianne Steel-Duncan (DM Paediatrics). "Health-related quality of life in children with Type-I diabetes in Jamaica."
- 2002-2003 Anthony Williams (DM Anaesthesia and Intensive Care). "Predicting outcomes in the intensive care unit of the University Hospital of the West Indies."
- 2001-2002 Cecilio Eck (DM Paediatrics). "Paediatric admissions to the University Hospital of the West Indies in 1999"
- 2000-2001 Tracey Evans-Gilbert (DM Paediatrics). "Validation of the paediatric risk of mortality (PRISM) score in a Jamaican paediatric intensive care unit."
- 2000-2001 Carleen Grant (DM Paediatrics). "The management of acute otitis media in children over 2 months of age."

K. Programme Development

I am developing an electronic Data Research Infrastructure (eRDI) at the George Alleyne Chronic Disease Research Centre. This includes online software for data collection, data analytics, and data sharing. The first available component is for data collection (REDCap) and this is available at (<https://caribdata.org/redcap/>). Further development is underway, in collaboration with Campus IT Services and Library colleagues. We hope to be able to offer this research infrastructure to campus colleagues. To complement this infrastructure I run a free informal advice service to the University of the West Indies research community.

With colleagues, I have developed the Masters programme in Biostatistics, registered at the Mona campus, along with statistical service courses for medical undergraduates and masters-level students.

2011-2013, I have re-developed PBHE6100 – Statistics for Public Health – a 3-unit module for the Masters in Public health offered by the Faculty of Medical Sciences.

2015-2016, I have re-developed PBHE6105 – Quantitative Data Analysis– a 2-unit module for the Masters in Public health offered by the Faculty of Medical Sciences.

2017-current	Development of an “electronic Research Data Infrastructure (eRDI), comprising online facilities for data collection, data analytics, and data sharing. See section
2006-2009	Research Clinic. Developed and operate a free informal “Research Clinic”, advising students and researchers on all aspects of study design, data management, and data analysis. This advisory service has been offered to the clinical research community of the Faculty of Medical Sciences and the Queen Elizabeth Hospital since 2006.
2004-2007	MSc Biostatistics, The University of the West Indies. Developed complete syllabus for the Masters course in Biostatistics offered at the Tropical Medicine Research Institute, Mona campus. This syllabus includes many of the basic statistical courses required to operate independently as a professional statistical in the Caribbean. Syllabus originally developed in 2004 and extensively reworked in 2007.
2002-2004	MSc Nutrition, The University of the West Indies. Developed taught course “Introduction to statistics” for Masters programme in Nutrition, The University of the West Indies, Mona campus.
2001	World Health Organization / Pitt University. Developed the online supercourse “Survival estimates in prevalent cohorts: an application in sickle cell anaemia.” Internet: http://www.pitt.edu/~super1/lecture/lec5541/index.htm
1996-1997	MBBS Medicine, Charing X Medical School. Developed taught course “Introduction to Medical Statistics” for medical undergraduates.

L. Evidence of Quality Teaching

I continue to run my informal "research clinic". I have taught on a number of statistical and research methods courses for medical undergraduates and masters students.

2020-current	Examiner for UWI Open Campus course. HREP 5105. "Principles of Epidemiological Data Management."
2019-current	Examiner for UWI Cave Hill course. PBHE 6200. "Epidemiology I."
2017-current	Developed and deliver short course on "Using REDCap for research data management and study management"
2015-current	Course Coordinator. Quantitative Data Analysis (PBHE6105). Development and delivery of this 2-unit course (26 contact hours) for the Masters in Public Health. Included workshop series on Statistical Computing. Included revamp of course materials and change from 1 credit to 2 credit course.
2010-2015	Course Coordinator. Statistics for Public Health (PBHE6100). Development and delivery of this 3-unit course (39 contact hours) for the Masters in Public Health. Included workshop series on Statistical Computing. Included revamp of course materials and change to operation of course over 2 semesters.
2010-2013	Course Coordinator. Introduction to Statistical Computing 1 (Introduction to Stata) Development and delivery of short course on statistical computing for Ministry of Health personnel.
2009-2010	Masters in Public Health. Taught revision course "Introduction to Statistics " for students re-sitting this course module.
2006-2009	Research Clinic. Operate a free weekly "Research Clinic", advising students and researchers on all aspects of study design, data management, and data analysis.
2002-2004	Basic Research Methods. Taught on Caribbean Health Research Council course "Basic research methods" at Mona Campus, the University of the West Indies.
2002-2004	MBBS Medicine, The University of the West Indies. Taught course "Introduction to Medical Statistics" to medical undergraduates.
2002-2004	MSc Nutrition, The University of the West Indies. Taught course "Introduction to statistics" for Masters programme in Nutrition, The University of the West Indies, Mona campus.
1996-1997	MBBS Medicine, Charing X Medical School. Taught course "Introduction to Medical Statistics" to medical undergraduates.