



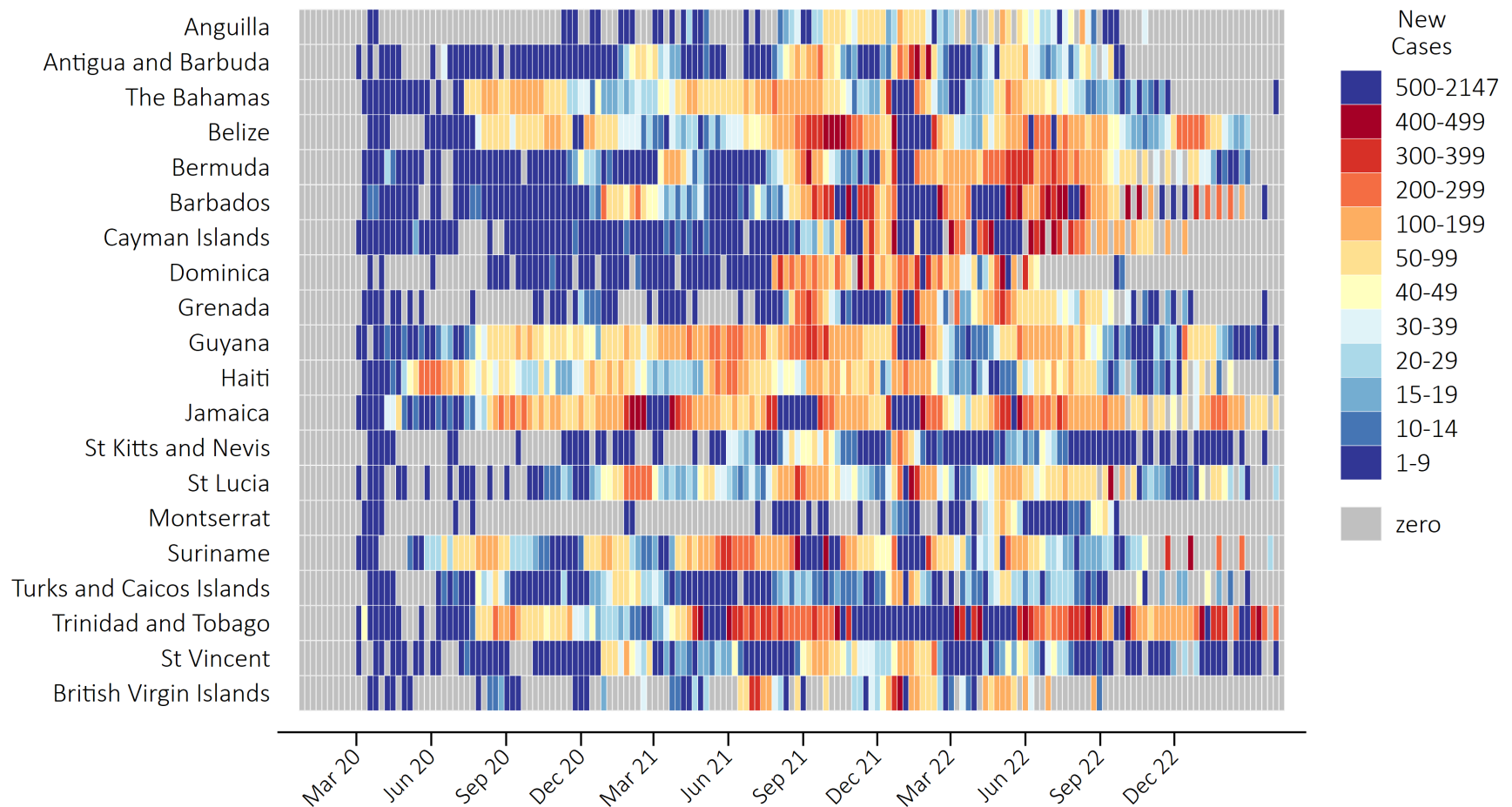
COVID-19 Heatmap: Daily Cases in 20 Caribbean Countries and Territories

Briefing created by staff of the George Alleyne Chronic Disease Research Centre and the Public Health Group of The Faculty of Medical Sciences, Cave Hill Campus, The University of the West Indies. *Group Contacts: Ian Hambleton (analytics), Maddy Murphy (public health interventions), Kim Quimby (logistics planning), Natasha Sobers (surveillance).* For all our COVID-19 surveillance outputs, go to www.ianhambleton.com/covid19

Updated on: 20 Apr 2023 at 07:50:05

Aim of this briefing. On this page we present the number of confirmed daily COVID-19 cases (**see note 1**) among 20 Caribbean countries and territories (**see note 2**) since the start of the outbreak. We present this information as a heatmap to visually summarise the situation as of 20 Apr 2023. The heatmap was created: (A) to highlight outbreak hotspots, and (B) to track locations that have seen small numbers of recent cases. An extended period with no or sporadic isolated cases might be used as one of several potential triggers needed before considering the easing of national COVID-19 control measures.

Daily cases by 20 Apr 2023





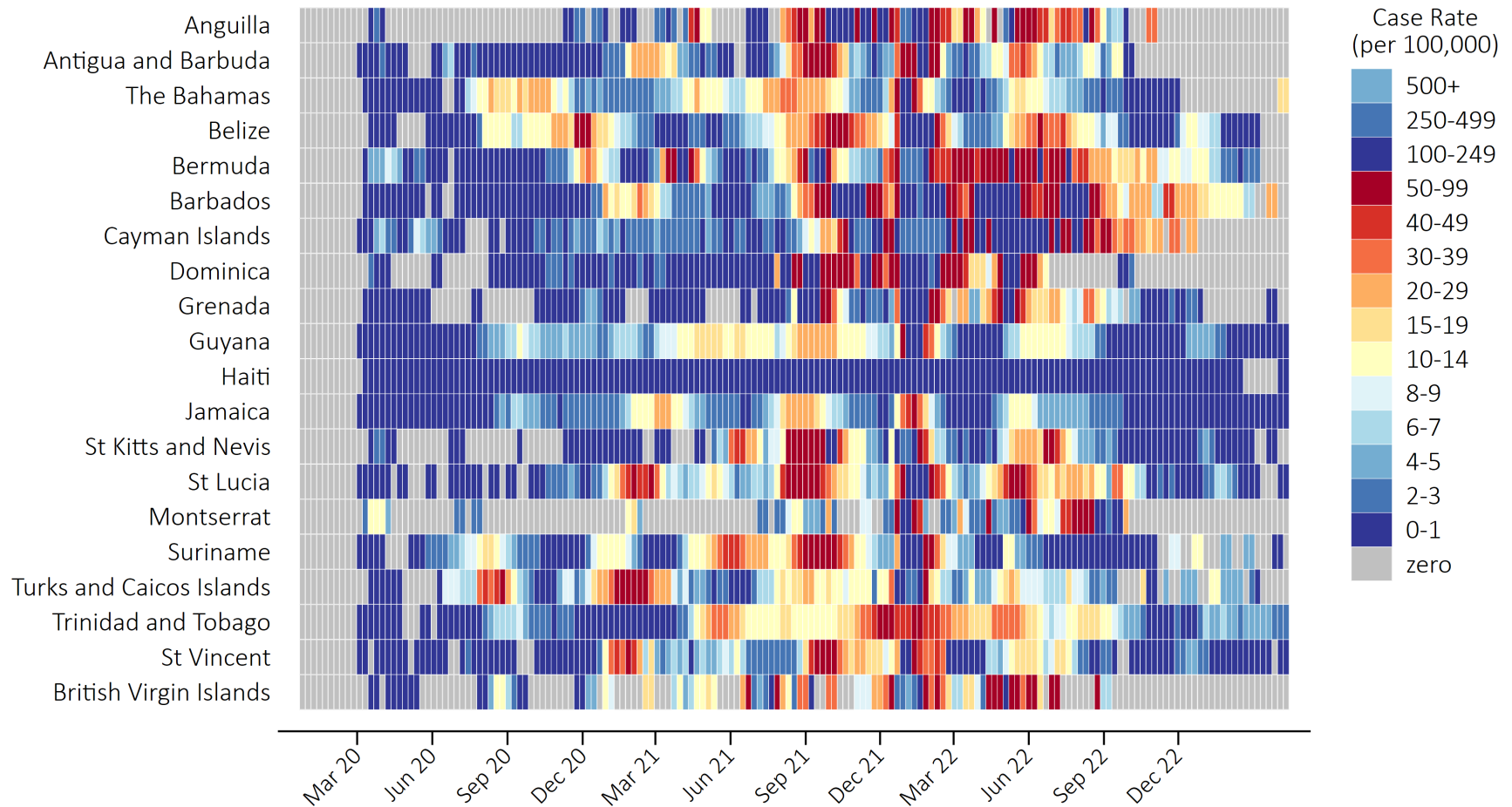
COVID-19 Heatmap: Case Rates (per 100,000) in 20 Caribbean Countries and Territories

Briefing created by staff of the George Alleyne Chronic Disease Research Centre and the Public Health Group of The Faculty of Medical Sciences, Cave Hill Campus, The University of the West Indies. *Group Contacts: Ian Hambleton (analytics), Maddy Murphy (public health interventions), Kim Quimby (logistics planning), Natasha Sobers (surveillance).* For all our COVID-19 surveillance outputs, go to www.ianhambleton.com/covid19

Updated on: 20 Apr 2023 at 07:50:07

Aim of this briefing. On this page we present the case rate (per 100,000 people) for confirmed COVID-19 cases (**see note 1**) among 20 Caribbean countries and territories (**see note 2**) since the start of the outbreak. We present this information as a heatmap to visually summarise the situation as of 20 Apr 2023. The case rate is a better metric for directly comparing outbreaks between countries with different population sizes.

Case rate by 20 Apr 2023





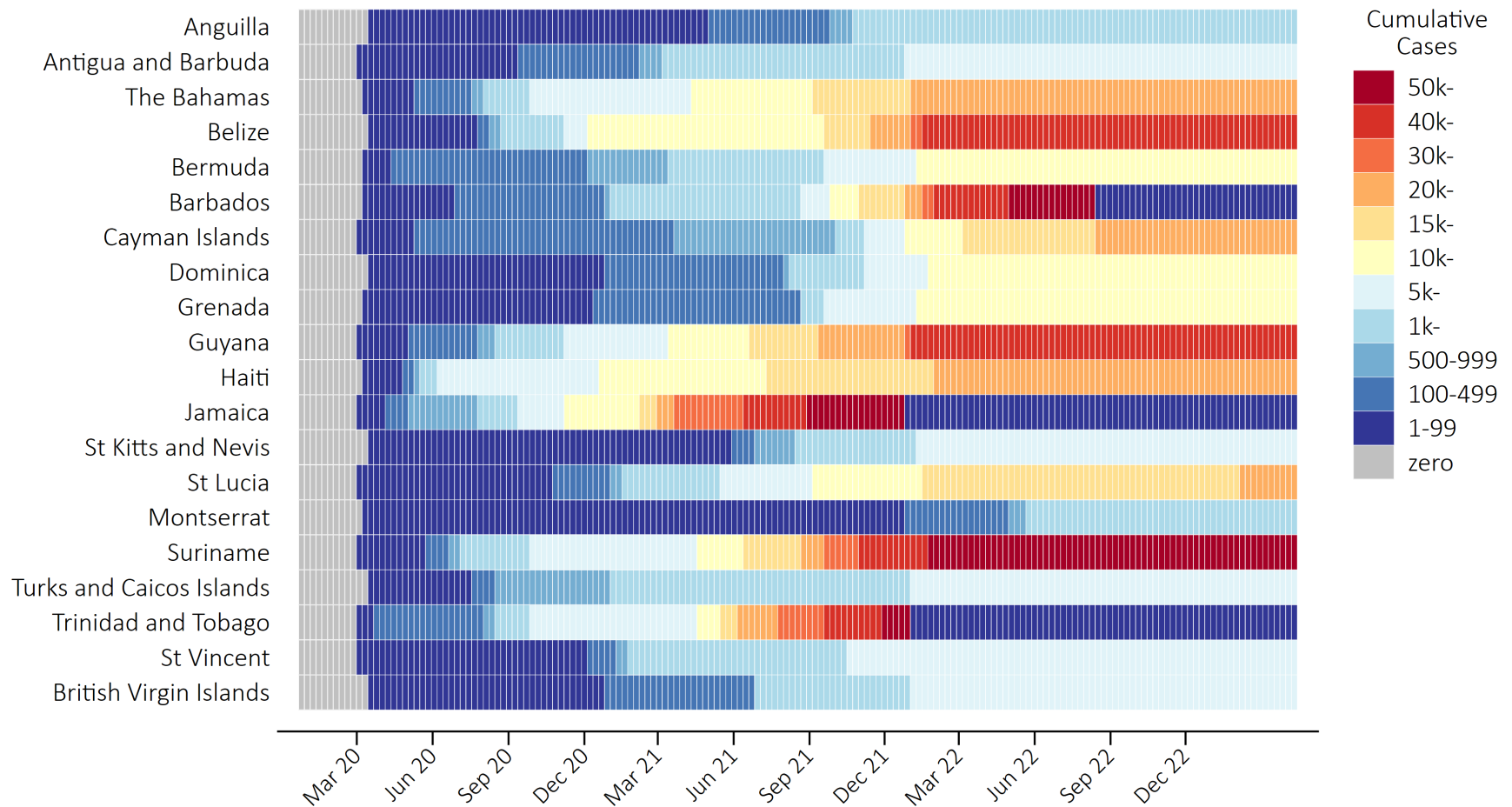
COVID-19 Heatmap: Cumulative Cases in 20 Caribbean Countries and Territories

Briefing created by staff of the George Alleyne Chronic Disease Research Centre and the Public Health Group of The Faculty of Medical Sciences, Cave Hill Campus, The University of the West Indies. *Group Contacts: Ian Hambleton (analytics), Maddy Murphy (public health interventions), Kim Quimby (logistics planning), Natasha Sobers (surveillance).* For all our COVID-19 surveillance outputs, go to www.ianhambleton.com/covid19

Updated on: 20 Apr 2023 at 07:50:08

Aim of this briefing. We present the cumulative number of confirmed COVID-19 cases (**see note 1**) among 20 Caribbean countries and territories (**see note 2**) since the start of the outbreak. We use heatmaps to visually summarise the situation as of 20 Apr 2023. The intention is to highlight outbreak hotspots.

Cumulative cases by 20 Apr 2023





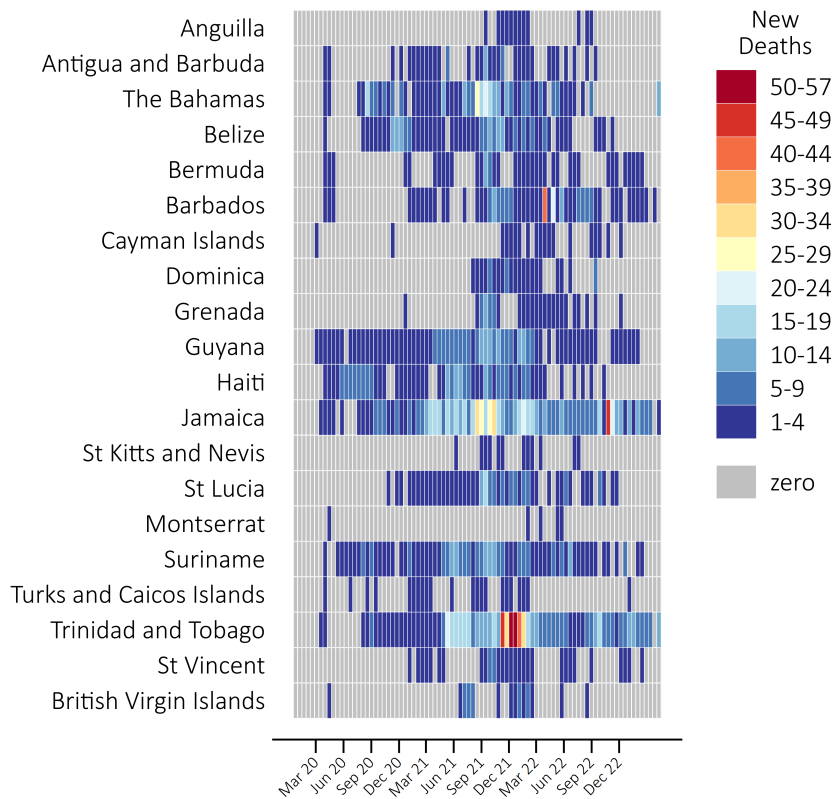
COVID-19 Heatmap: Deaths in 20 Caribbean Countries and Territories

Briefing created by staff of the George Alleyne Chronic Disease Research Centre and the Public Health Group of The Faculty of Medical Sciences, Cave Hill Campus, The University of the West Indies. *Group Contacts: Ian Hambleton (analytics), Maddy Murphy (public health interventions), Kim Quimby (logistics planning), Natasha Sobers (surveillance).* For all our COVID-19 surveillance outputs, go to www.ianhambleton.com/covid19

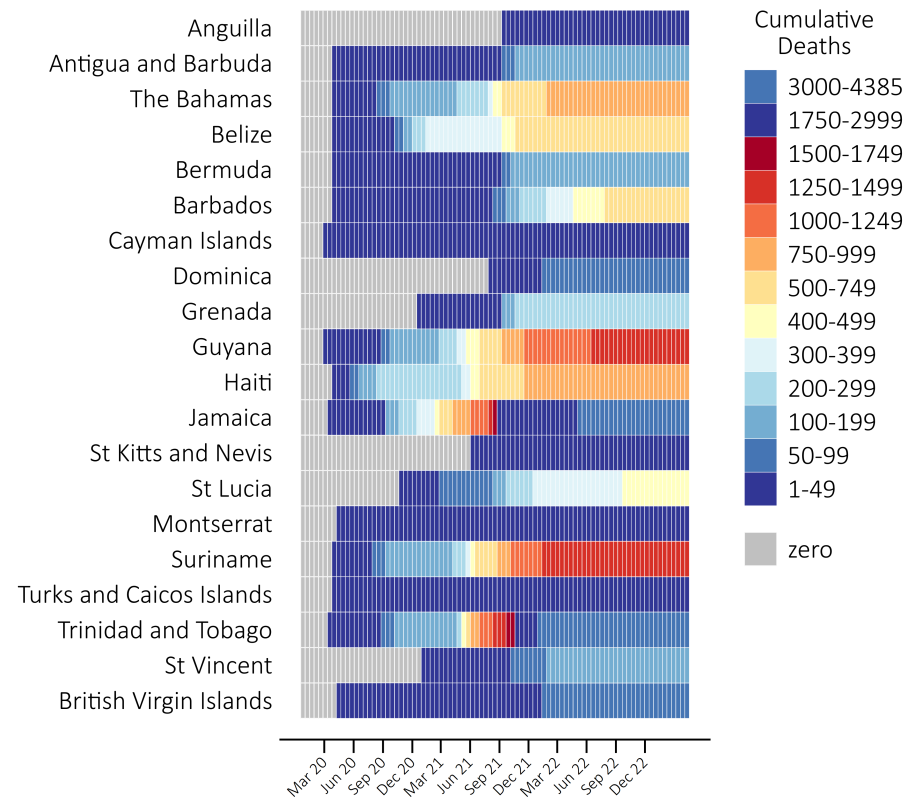
Updated on: 20 Apr 2023 at 07:50:09

Aim of this briefing. On this page we present the number of confirmed daily and cumulative COVID-19 deaths (**see note 1**) among 20 Caribbean countries and territories (**see note 2**) since the start of the outbreak. We present this information as a heatmap to visually summarise the situation as of 20 Apr 2023.

Daily deaths by 20 Apr 2023



Cumulative deaths by 20 Apr 2023



(NOTE 1) Data Source. Dong E, Du H, Gardner L. An interactive web-based dashboard to track COVID-19 in real time. *Lancet Infect Dis*; published online Feb 19. [https://doi.org/10.1016/S1473-3099\(20\)30120-1](https://doi.org/10.1016/S1473-3099(20)30120-1)

(NOTE 2) Countries and territories included in this briefing: Countries and territories included in this briefing: *CARICOM member states*: Antigua and Barbuda, The Bahamas, Barbados, Belize, Dominica, Grenada, Guyana, Haiti, Jamaica, St. Kitts and Nevis, St. Lucia, St. Vincent and the Grenadines, Suriname, Trinidad and Tobago. *United Kingdom Overseas Territories (UKOTS)*: Anguilla, Bermuda, British Virgin Islands, Cayman Islands, Montserrat, Turks and Caicos Islands.